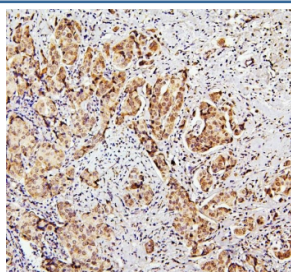


SUZ12 Antibody (RQ5598)

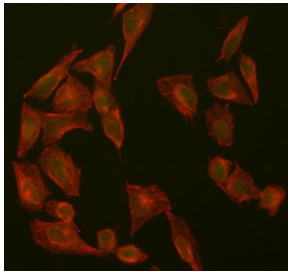
Catalog No.	Formulation	Size
RQ5598	0.5mg/ml if reconstituted with 0.2ml sterile DI water	100 ug

[Bulk quote request](#)

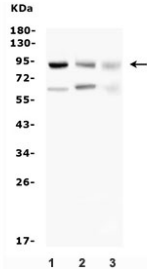
Availability	1-3 business days
Species Reactivity	Human, Mouse
Format	Antigen affinity purified
Host	Rabbit
Clonality	Polyclonal (rabbit origin)
Isotype	Rabbit IgG
Purity	Affinity purified
Buffer	Lyophilized from 1X PBS with 2% Trehalose and 0.025% sodium azide
UniProt	Q15022
Applications	Western Blot : 0.25-0.5ug/ml Immunohistochemistry (FFPE) : 1-2ug/ml Immunofluorescence : 5ug/ml Direct ELISA : 0.1-0.5ug/ml
Limitations	This SUZ12 antibody is available for research use only.



IHC staining of FFPE human breast cancer with SUZ12 antibody. HIER: boil tissue sections in pH6, 10mM citrate buffer, for 20 min and allow to cool before testing.



Immunofluorescent staining of FFPE human U-2 OS cells with SUZ12 antibody (green) and Beta Tubulin mAb (red). HIER: steam section in pH6 citrate buffer for 20 min.



Western blot testing of 1) human HL-60, 2) rat C6 and 3) mouse SP2/0 lysate with SUZ12 antibody. Expected molecular weight 83~95 kDa.

Description

Polycomb protein SUZ12 is a protein that in humans is encoded by the SUZ12 gene. It is mapped to 17q11.2. This zinc finger gene has been identified at the breakpoints of a recurrent chromosomal translocation reported in endometrial stromal sarcoma. Recombination of these breakpoints results in the fusion of this gene and JAZF1. The protein encoded by this gene contains a zinc finger domain in the C terminus of the coding region.

Application Notes

Optimal dilution of the SUZ12 antibody should be determined by the researcher.

Immunogen

A human recombinant protein (amino acids K72-K483) was used as the immunogen for the SUZ12 antibody.

Storage

After reconstitution, the SUZ12 antibody can be stored for up to one month at 4°C. For long-term, aliquot and store at -20°C. Avoid repeated freezing and thawing.