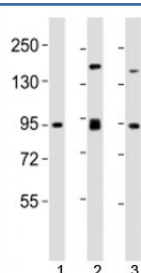


SUZ12 Antibody (F53390)

Catalog No.	Formulation	Size
F53390-0.4ML	In 1X PBS, pH 7.4, with 0.09% sodium azide	0.4 ml
F53390-0.08ML	In 1X PBS, pH 7.4, with 0.09% sodium azide	0.08 ml

[Bulk quote request](#)

Availability	1-3 business days
Species Reactivity	Human, Mouse
Format	Antigen affinity purified
Clonality	Polyclonal (rabbit origin)
Isotype	Rabbit Ig
Purity	Antigen affinity
UniProt	Q15022
Applications	Western Blot : 1:2000
Limitations	This SUZ12 antibody is available for research use only.



Western blot testing of SUZ12 antibody at 1:2000 dilution. Lane 1: mouse spleen lysate; 2: F9 lysate; 3: HeLa lysate; Observed molecular weight 83~95 kDa.

Description

Polycomb group (PcG) protein. Component of the PRC2/EED- EZH2 complex, which methylates 'Lys-9' (H3K9me) and 'Lys-27' (H3K27me) of histone H3, leading to transcriptional repression of the affected target gene. The PRC2/EED-EZH2 complex may also serve as a recruiting platform for DNA methyltransferases, thereby linking two epigenetic repression systems. Genes repressed by the PRC2/EED-EZH2 complex include HOXC8, HOXA9, MYT1 and CDKN2A.

Application Notes

Titration of the SUZ12 antibody may be required due to differences in protocols and secondary/substrate sensitivity.

Immunogen

This SUZ12 antibody was produced from a rabbit immunized with a KLH conjugated synthetic peptide between 375-408 amino acids from the Central region of human SUZ12.

Storage

Aliquot the SUZ12 antibody and store frozen at -20oC or colder. Avoid repeated freeze-thaw cycles.