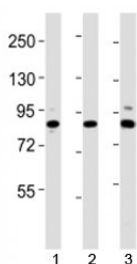


## Suz12 Antibody (F53232)

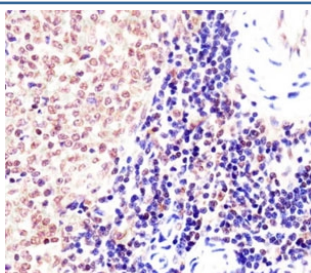
Catalog No.	Formulation	Size
F53232-0.4ML	In 1X PBS, pH 7.4, with 0.09% sodium azide	0.4 ml
F53232-0.08ML	In 1X PBS, pH 7.4, with 0.09% sodium azide	0.08 ml

**Bulk quote request**

<b>Availability</b>	1-3 business days
<b>Species Reactivity</b>	Human, Mouse
<b>Format</b>	Antigen affinity purified
<b>Clonality</b>	Polyclonal (rabbit origin)
<b>Isotype</b>	Rabbit Ig
<b>Purity</b>	Antigen affinity
<b>UniProt</b>	Q80U70
<b>Localization</b>	Nuclear
<b>Applications</b>	Western Blot : 1:2000 IHC (FFPE) : 1:25
<b>Limitations</b>	This Suz12 antibody is available for research use only.



Western blot testing of Suz12 antibody at 1:2000 dilution. Lane 1: mouse spleen lysate; 2: mouse cerebellum lysate; 3: human HeLa lysate; Observed molecular weight 83~95 kDa.



IHC testing of FFPE mouse spleen with Suz12 antibody at 1:25. HIER: steam sections in pH6 citrate buffer.

## Description

Polycomb group (PcG) protein. Component of the PRC2/EED- EZH2 complex, which methylates 'Lys-9' (H3K9me) and 'Lys-27' (H3K27me) of histone H3, leading to transcriptional repression of the affected target gene. The PRC2/EED-EZH2 complex may also serve as a recruiting platform for DNA methyltransferases, thereby linking two epigenetic repression systems (By similarity). Genes repressed by the PRC2/EED-EZH2 complex include HOXA7, HOXB6 and HOXC8.

## Application Notes

Titration of the Suz12 antibody may be required due to differences in protocols and secondary/substrate sensitivity.

## Immunogen

This mouse Suz12 antibody was produced from a rabbit immunized with a KLH conjugated synthetic peptide between 381-395 amino acids from the Central region of mouse Suz12.

## Storage

Aliquot the Suz12 antibody and store frozen at -20oC or colder. Avoid repeated freeze-thaw cycles.