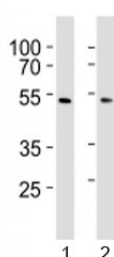


## SUV39H2 Antibody (KMT1B) (F42487)

Catalog No.	Formulation	Size
F42487-0.4ML	In 1X PBS, pH 7.4, with 0.09% sodium azide	0.4 ml
F42487-0.08ML	In 1X PBS, pH 7.4, with 0.09% sodium azide	0.08 ml

[Bulk quote request](#)

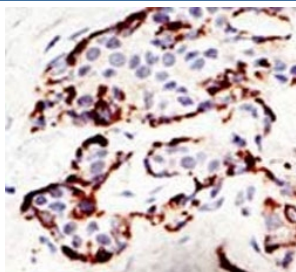
<b>Availability</b>	1-3 business days
<b>Species Reactivity</b>	Human, Mouse
<b>Format</b>	Purified
<b>Host</b>	Rabbit
<b>Clonality</b>	Polyclonal (rabbit origin)
<b>Isotype</b>	Rabbit Ig
<b>Purity</b>	Purified
<b>UniProt</b>	Q9H5I1
<b>Applications</b>	Western Blot : 1:1000 IHC (Paraffin) : 1:50-1:100
<b>Limitations</b>	This SUV39H2 antibody is available for research use only.



Western blot analysis of lysate from 1) HepG2 and 2) HUVEC cell line using SUV39H2 antibody at 1:1000. Expected molecular weight: 40-53 kDa.



Western blot testing of SUV39H2 antibody and mouse kidney tissue lysate. Expected molecular weight: 40-53 kDa.



IHC analysis of FFPE human breast carcinoma tissue stained with the SUV39H2 antibody.

## Description

The murine gene *Suv39h2/kmt1b* encodes an H3 histone methyltransferase (HMTase) 59% identical in sequence to mouse *Suv39h1*. During embryogenesis, both proteins overlap in tissue expression, yet *Suv39h2* transcripts are restricted to the testes in adult animals. Immunolocalization of the *Suv39h2* protein during spermatogenesis indicates enrichment at the heterochromatin from the leptotene to the round spermatid stage. Moreover, *Suv39h2* specifically accumulates with chromatin of the sex chromosomes, which undergo transcriptional silencing during the first meiotic prophase. *Suv39h2* HMTase may also organize meiotic heterochromatin with the potential for epigenetic imprint to the male germline.

## Application Notes

Titration of the SUV39H2 antibody may be required due to differences in protocols and secondary/substrate sensitivity.

## Immunogen

A portion of amino acids 93-122 from the human protein was used as the immunogen for this KMT1B / SUV39H2 antibody.

## Storage

Aliquot the SUV39H2 antibody and store frozen at -20°C or colder. Avoid repeated freeze-thaw cycles.