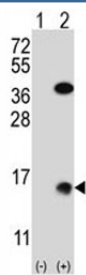


SUMO2 Antibody (F42523)

Catalog No.	Formulation	Size
F42523-0.4ML	In 1X PBS, pH 7.4, with 0.09% sodium azide	0.4 ml
F42523-0.08ML	In 1X PBS, pH 7.4, with 0.09% sodium azide	0.08 ml

[Bulk quote request](#)

Availability	1-3 business days
Species Reactivity	Xenopus
Format	Antigen affinity purified
Host	Rabbit
Clonality	Polyclonal (rabbit origin)
Isotype	Rabbit Ig
Purity	Antigen affinity
UniProt	Q7ZTK7
Applications	Western Blot : 1:1000
Limitations	This SUMO2 antibody is available for research use only.



Western blot analysis of SUMO2 antibody and 293 cell lysate (2 ug/lane) either nontransfected (Lane 1) or transiently transfected (2) with the SUMO2 gene.

Description

SUMO2 is a ubiquitin-like protein which can be covalently attached to target lysines either as a monomer or as a lysine-linked polymer. SUMO2 does not seem to be involved in protein degradation and may function as an antagonist of ubiquitin in the degradation process. This protein plays a role in a number of cellular processes such as nuclear transport, DNA replication and repair, mitosis and signal transduction. Covalent attachment to its substrates requires prior activation by the E1 complex SAE1-SAE2 and linkage to the E2 enzyme UBE2I, and can be promoted by E3 ligases such as PIAS isoforms 1-4.

Application Notes

Titration of the SUMO2 antibody may be required due to differences in protocols and secondary/substrate sensitivity.

Immunogen

A portion of amino acids 1-30 from the xenla protein was used as the immunogen for this SUMO2 antibody.

Storage

Aliquot the SUMO2 antibody and store frozen at -20oC or colder. Avoid repeated freeze-thaw cycles.