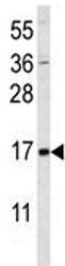


SUMO1 Antibody (F42010)

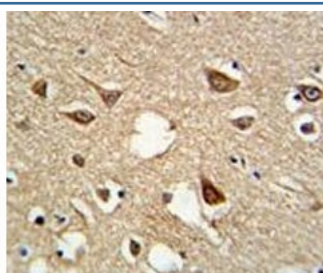
Catalog No.	Formulation	Size
F42010-0.4ML	In 1X PBS, pH 7.4, with 0.09% sodium azide	0.4 ml
F42010-0.08ML	In 1X PBS, pH 7.4, with 0.09% sodium azide	0.08 ml

[Bulk quote request](#)

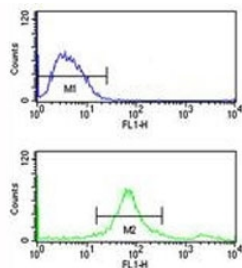
Availability	1-3 business days
Species Reactivity	Human
Format	Antigen affinity purified
Clonality	Polyclonal (rabbit origin)
Isotype	Rabbit Ig
Purity	Antigen affinity
UniProt	P63165
Applications	Western Blot : 1:1000 IHC (Paraffin) : 1:50-1:100 Flow Cytometry : 1:10-1:50 Immunofluorescence : 1:10-1:50
Limitations	This SUMO1 antibody is available for research use only.



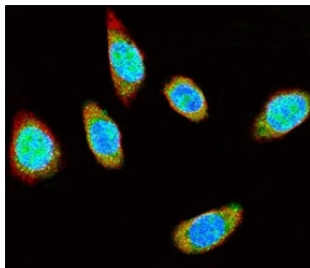
Western blot analysis of SUMO1 antibody and MCF-7 lysate. Predicted molecular weight: 12-15 kDa



IHC analysis of FFPE human brain tissue stained with SUMO1 antibody



SUMO1 antibody flow cytometry analysis of MCF-7 cells (bottom histogram) compared to a negative control (top histogram). FITC-conjugated goat-anti-rabbit secondary Ab was used for the analysis.



Confocal immunofluorescent analysis of SUMO1 antibody with A375 cells followed by Alexa Fluor 488-conjugated goat anti-rabbit IgG (green). Actin filaments have been labeled with Alexa Fluor 555 Phalloidin (red). DAPI was used as a nuclear counterstain (blue).

Description

Covalent modification of target lysines by SUMO (small ubiquitin-like modifier) modulates processes such as protein localization, transcription, nuclear transport, mitosis, DNA replication and repair, signal transduction, and viral reproduction. SUMO does not seem to be involved in protein degradation and may in fact function as an antagonist of ubiquitin in the degradation process. The SUMO family consists of SUMO1 and closely related homologs SUMO2, SUMO3, and SUMO4. Sumoylation has been shown to regulate a wide range of proteins, including MDM2, PIAS, PML, RanGAP1, RanBP2, p53, p73, HIPK2, TEL, c-Jun, Fas, Daxx, TNFRI, Topo-I, Topo-II, PARK2, WRN, Sp100, IκB-α, Androgen receptor (AR), GLUT1/4, CaMK, DNMT3B, TDG, HIF1A, CHD3, EXOSC9, RAD51, and viral targets such as CMV-IE1/2, EBV-BZLF1, and HPV/BPV-E1.

Application Notes

Titration of the SUMO1 antibody may be required due to differences in protocols and secondary/substrate sensitivity.

Immunogen

This SUMO1 antibody was produced from rabbits immunized with human SUMO1 recombinant protein.

Storage

Aliquot the SUMO1 antibody and store frozen at -20°C or colder. Avoid repeated freeze-thaw cycles.