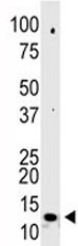


SUMO-2 Antibody (F42016)

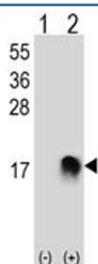
Catalog No.	Formulation	Size
F42016-0.4ML	In 1X PBS, pH 7.4, with 0.09% sodium azide	0.4 ml
F42016-0.08ML	In 1X PBS, pH 7.4, with 0.09% sodium azide	0.08 ml

[Bulk quote request](#)

Availability	1-3 business days
Species Reactivity	Human
Format	Purified
Host	Rabbit
Clonality	Polyclonal (rabbit origin)
Isotype	Rabbit Ig
Purity	Purified
UniProt	P61956
Applications	Western Blot : 1:1000
Limitations	This SUMO-2 antibody is available for research use only.



Western blot analysis of SUMO-2 antibody and 293 cell lysate. Observed molecular weight: 12-15 kDa.



Western blot analysis of SUMO-2 antibody and 293 cell lysate (2 ug/lane) either nontransfected (Lane 1) or transiently transfected (2) with the SUMO2 gene.

Description

SUMO2 and SUMO3 are members of the SUMO (small ubiquitin-like modifier) protein family. This protein family functions in a manner similar to ubiquitin in that it is bound to target proteins as part of a post-translational modification system. However, unlike ubiquitin which targets proteins for degradation, this protein is involved in a variety of cellular processes, such as nuclear transport, transcriptional regulation, apoptosis, and protein stability. In vertebrates, three members of the SUMO family have been described, SUMO 1 and the functionally distinct homologues SUMO 2 and SUMO 3. SUMO modification sites present in the N terminal regions of SUMO 2 and SUMO 3 are utilized by SAE1/SAE2 (SUMO E1) and Ubc9 (SUMO E2) to form polymeric chains of SUMO 2 and SUMO 3 on protein substrates, a property not shared by SUMO 1.

Application Notes

Titration of the SUMO-2 antibody may be required due to differences in protocols and secondary/substrate sensitivity.

Immunogen

This SUMO-2 antibody was produced from rabbits immunized with a KLH conjugated synthetic peptide from the human protein.

Storage

Aliquot the SUMO-2 antibody and store frozen at -20oC or colder. Avoid repeated freeze-thaw cycles.