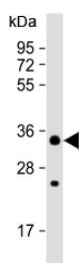


STUB1 Antibody (F40135)

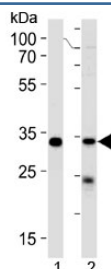
Catalog No.	Formulation	Size
F40135-0.4ML	In 1X PBS, pH 7.4, with 0.09% sodium azide	0.4 ml
F40135-0.08ML	In 1X PBS, pH 7.4, with 0.09% sodium azide	0.08 ml

[Bulk quote request](#)

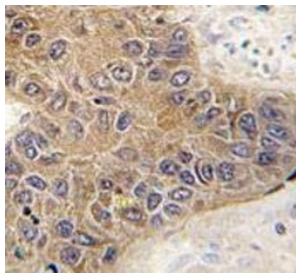
Availability	1-3 business days
Species Reactivity	Human
Predicted Reactivity	Chicken, Mouse
Format	Antigen affinity purified
Clonality	Polyclonal (rabbit origin)
Isotype	Rabbit Ig
Purity	Antigen affinity
UniProt	Q9UNE7
Localization	Cytoplasmic
Applications	Western Blot : 1:1000 IHC (Paraffin) : 1:50-1:100
Limitations	This STUB1 antibody is available for research use only.



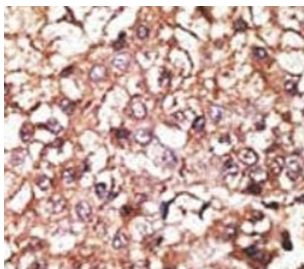
CHIP / STUB1 antibody western blot analysis in MCF7 lysate. Predicted molecular weight ~35 kDa.



STUB1 antibody western blot analysis in 1) 293 cell line and 2) human placenta lysate. Predicted molecular weight ~35 kDa.



IHC analysis of FFPE human hepatocarcinoma tissue stained with STUB1 antibody



IHC analysis of FFPE human hepatocarcinoma stained with the STUB1 antibody

Description

CHIP is an E3 ligase for nNOS whose action is facilitated by (and possibly requires) its interaction with nNOS-bound hsp70. Co-chaperone CHIP, possibly with another E3 ligase(s), modulates the ubiquitylation of mutant Cu/Zn-superoxide dismutase and renders them more susceptible for proteasomal degradation. CHIP functions as a negative regulator of AR transcriptional activity by promoting AR degradation. CHIP-Hsc70 complex ubiquitinates phosphorylated tau and enhances cell survival. CHIP can interact with the Smad1/Smad4 proteins and block BMP signal transduction through the ubiquitin-mediated degradation of Smad proteins. CHIP E3 controls both the association of Hsp70/Hsp90 chaperones with ErbB2 and the down-regulation of ErbB2 induced by inhibitors of Hsp90. CHIP is associated with Parkin and enhances its ubiquitin ligase activity related to Parkinson's disease.

Application Notes

Titration of the STUB1 antibody may be required due to differences in protocols and secondary/substrate sensitivity.

Immunogen

A portion of amino acids 203-231 from the human protein was used as the immunogen for this STUB1 antibody.

Storage

Aliquot the STUB1 antibody and store frozen at -20oC or colder. Avoid repeated freeze-thaw cycles.