

STIM2 Antibody (F42273)

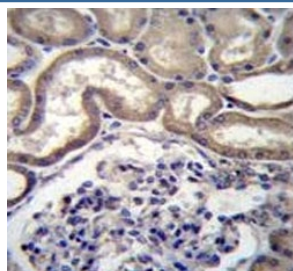
Catalog No.	Formulation	Size
F42273-0.4ML	In 1X PBS, pH 7.4, with 0.09% sodium azide	0.4 ml
F42273-0.08ML	In 1X PBS, pH 7.4, with 0.09% sodium azide	0.08 ml

[Bulk quote request](#)

Availability	1-3 business days
Species Reactivity	Human
Format	Antigen affinity purified
Host	Rabbit
Clonality	Polyclonal (rabbit origin)
Isotype	Rabbit Ig
Purity	Antigen affinity
UniProt	Q9P246
Applications	Western Blot : 1:1000 IHC (Paraffin) : 1:10-1:50
Limitations	This STIM2 antibody is available for research use only.

250
130
95
72
55

STIM2 antibody western blot analysis in uterus tumor lysate. Predicted molecular weight: 84/94/68 kDa (isoforms 1/2/3).



STIM2 antibody immunohistochemistry analysis in formalin fixed and paraffin embedded human kidney tissue.

Description

This gene is a member of the stromal interaction molecule (STIM) family and likely arose, along with related family member STIM1, from a common ancestral gene. The encoded protein functions to regulate calcium concentrations in the cytosol and endoplasmic reticulum, and is involved in the activation of plasma membrane Orai Ca(2+) entry channels. This gene initiates translation from a non-AUG (UUG) start site. A signal peptide is cleaved from the resulting protein. Multiple transcript variants result from alternative splicing.

Application Notes

Titration of the STIM2 antibody may be required due to differences in protocols and secondary/substrate sensitivity.

Immunogen

A portion of amino acids 98-127 from the human protein was used as the immunogen for this STIM2 antibody.

Storage

Aliquot the STIM2 antibody and store frozen at -20oC or colder. Avoid repeated freeze-thaw cycles.