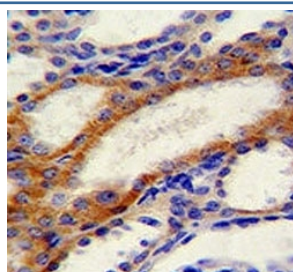


STIM1 Antibody (F40480)

Catalog No.	Formulation	Size
F40480-0.4ML	In 1X PBS, pH 7.4, with 0.09% sodium azide	0.4 ml
F40480-0.08ML	In 1X PBS, pH 7.4, with 0.09% sodium azide	0.08 ml

[Bulk quote request](#)

Availability	1-3 business days
Species Reactivity	Human
Predicted Reactivity	Mouse
Format	Antigen affinity purified
Host	Rabbit
Clonality	Polyclonal (rabbit origin)
Isotype	Rabbit Ig
Purity	Antigen affinity
UniProt	Q13586
Applications	Western Blot : 1:1000 IHC (Paraffin) : 1:50-1:100
Limitations	This STIM1 antibody is available for research use only.



STIM1 antibody immunohistochemistry analysis in formalin fixed and paraffin embedded human kidney tissue.

250
130
95
72
55

STIM1 antibody western blot analysis in CEM lysate.

Description

This gene encodes a type 1 transmembrane protein that mediates Ca^{2+} influx after depletion of intracellular Ca^{2+} stores by gating of store-operated Ca^{2+} influx channels (SOCs). It is one of several genes located in the imprinted gene domain of 11p15.5, an important tumor-suppressor gene region. Alterations in this region have been associated with the Beckwith-Wiedemann syndrome, Wilms tumor, rhabdomyosarcoma, adrenocortical carcinoma, and lung, ovarian, and breast cancer. This gene may play a role in malignancies and disease that involve this region, as well as early hematopoiesis, by mediating attachment to stromal cells. This gene is oriented in a head-to-tail configuration with the ribonucleotide reductase 1 gene (RRM1), with the 3' end of this gene situated 1.6 kb from the 5' end of the RRM1 gene.

Application Notes

Titration of the STIM1 antibody may be required due to differences in protocols and secondary/substrate sensitivity.

Immunogen

A portion of amino acids 509-538 from the human protein was used as the immunogen for this STIM1 antibody.

Storage

Aliquot the STIM1 antibody and store frozen at -20°C or colder. Avoid repeated freeze-thaw cycles.