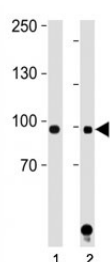


## STAT1 Antibody (F47593)

Catalog No.	Formulation	Size
F47593-0.4ML	In 1X PBS, pH 7.4, with 0.09% sodium azide	0.4 ml
F47593-0.08ML	In 1X PBS, pH 7.4, with 0.09% sodium azide	0.08 ml

[Bulk quote request](#)

<b>Availability</b>	1-3 business days
<b>Species Reactivity</b>	Human
<b>Format</b>	Antigen affinity purified
<b>Host</b>	Rabbit
<b>Clonality</b>	Polyclonal (rabbit origin)
<b>Isotype</b>	Rabbit Ig
<b>Purity</b>	Antigen affinity
<b>UniProt</b>	P42224
<b>Applications</b>	Western Blot : 1:1000
<b>Limitations</b>	This STAT1 antibody is available for research use only.



STAT1 antibody western blot analysis in (1) HeLa and (2) Jurkat lysate. Predicted molecular weight: ~91/84kDa (alpha/beta).

## Description

The protein encoded by this gene is a member of the STAT protein family. In response to cytokines and growth factors, STAT family members are phosphorylated by the receptor associated kinases, and then form homo- or heterodimers that translocate to the cell nucleus where they act as transcription activators. This protein can be activated by various ligands including interferon-alpha, interferon-gamma, EGF, PDGF and IL6. This protein mediates the expression of a variety of genes, which is thought to be important for cell viability in response to different cell stimuli and pathogens. Two alternatively spliced transcript variants encoding distinct isoforms have been described. [provided by RefSeq].

## Application Notes

Titration of the STAT1 antibody may be required due to differences in protocols and secondary/substrate sensitivity.

## Immunogen

A portion of amino acids 717-745 from the human protein was used as the immunogen for this STAT1 antibody.

## Storage

Aliquot the STAT1 antibody and store frozen at -20oC or colder. Avoid repeated freeze-thaw cycles.