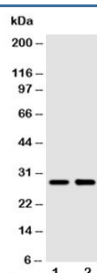


SSX2 Antibody (R30337)

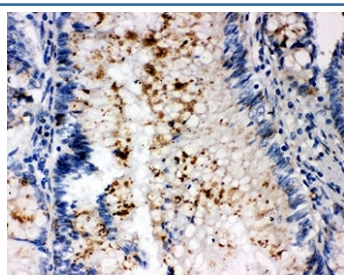
Catalog No.	Formulation	Size
R30337	0.5mg/ml if reconstituted with 0.2ml sterile DI water	100 ug

Bulk quote request

Availability	1-3 business days
Species Reactivity	Human
Format	Antigen affinity purified
Host	Rabbit
Clonality	Polyclonal (rabbit origin)
Isotype	Rabbit IgG
Purity	Antigen affinity
Buffer	Lyophilized from 1X PBS with 2.5% BSA and 0.025% sodium azide/thimerosal
UniProt	Q16385
Applications	Western Blot : 0.5-1ug/ml IHC (FFPE) : 0.5-1ug/ml
Limitations	This SSX2 antibody is available for research use only.



Western blot testing of SSX2 antibody and Lane 1: MCF-7; 2: HeLa cell lysate



IHC-P: SSX2 antibody testing of human intestinal cancer tissue

Description

Synovial sarcoma, X breakpoint 2, also known as SSX2, is a human gene. The product of this gene belongs to the family of highly homologous synovial sarcoma X(SSX) breakpoint proteins. SSX1, SSX2 and SSX4 genes have been involved in the t(X;18) translocation characteristically found in all synovial sarcomas. The SSX1 and SSX2 genes encode closely related proteins(81% identity) of 188 amino acids that are rich in charged amino acids. The N-terminal portion of each SSX protein exhibits homology to the Kruppel-associated box(KRAB), a transcriptional repressor domain previously found only in Kruppel-type zinc finger proteins.

Application Notes

The stated application concentrations are suggested starting amounts. Titration of the SSX2 antibody may be required due to differences in protocols and secondary/substrate sensitivity.

Immunogen

An amino acid sequence from the C-terminus of human Protein SSX2 (NREAQEKEERRGTAHRWSSQNTHNIGRF) was used as the immunogen for this SSX2 antibody.

Storage

After reconstitution, the SSX2 antibody can be stored for up to one month at 4oC. For long-term, aliquot and store at -20oC. Avoid repeated freezing and thawing.