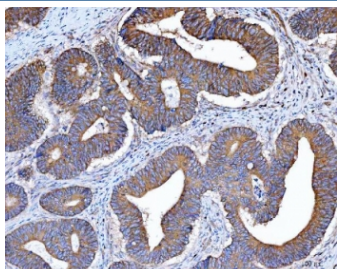


## Src Antibody (R31489)

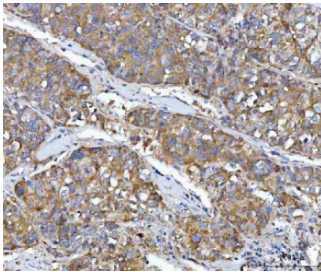
Catalog No.	Formulation	Size
R31489	0.5mg/ml if reconstituted with 0.2ml sterile DI water	100 ug

**Bulk quote request**

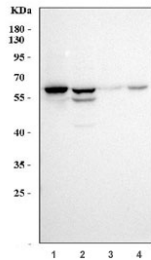
<b>Availability</b>	1-3 business days
<b>Species Reactivity</b>	Human
<b>Format</b>	Antigen affinity purified
<b>Host</b>	Rabbit
<b>Clonality</b>	Polyclonal (rabbit origin)
<b>Isotype</b>	Rabbit IgG
<b>Purity</b>	Antigen affinity
<b>Buffer</b>	Lyophilized from 1X PBS with 2% Trehalose
<b>UniProt</b>	P12931
<b>Localization</b>	Cytoplasmic, nuclear, cell membrane
<b>Applications</b>	Western Blot : 0.5-1ug/ml Immunohistochemistry (FFPE) : 2-5ug/ml Flow Cytometry : 1-3ug/million cells
<b>Limitations</b>	This Src antibody is available for research use only.



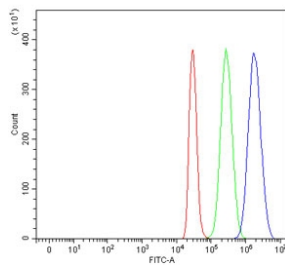
IHC staining of FFPE human rectal cancer tissue with Src antibody. HIER: boil tissue sections in pH8 EDTA for 20 min and allow to cool before testing.



IHC staining of FFPE human liver cancer tissue with Src antibody. HIER: boil tissue sections in pH8 EDTA for 20 min and allow to cool before testing.



Western blot testing of human 1) A549, 2) RT4, 3) PC-3 and 4) SH-SY5Y cell lysate with Src antibody. Predicted molecular weight: 55-60 kDa.



Flow cytometry testing of human HepG2 cells with Src antibody at 1ug/million cells (blocked with goat sera); Red=cells alone, Green=isotype control, Blue= Src antibody.

## Description

Sarcoma is a proto-oncogenic tyrosine kinase originally discovered by J. Michael Bishop and Harold E. Varmus. It belongs to a family of non-receptor tyrosine kinases called Src family kinases. The human proto-oncogene was assigned to chromosome 20. Its gene is mapped to 20q12-q13. The discovery of Src family proteins has been instrumental to the modern understanding of cancer as a disease where normally healthy cellular signalling has gone awry. This proto-oncogene may play a role in the regulation of embryonic development and cell growth.

## Application Notes

The stated application concentrations are suggested starting points. Titration of the Src antibody may be required due to differences in protocols and secondary/substrate sensitivity.

## Immunogen

Human partial recombinant protein (AA 2-368) was used as the immunogen for this Src antibody.

## Storage

After reconstitution, the Src antibody can be stored for up to one month at 4oC. For long-term, aliquot and store at -20oC. Avoid repeated freezing and thawing.

