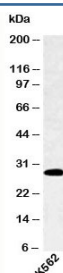


SPIB Antibody (N1035)

Catalog No.	Formulation	Size
N1035-100UG	0.5 mg/ml in 1X PBS with 0.1 mg/ml BSA (US sourced), 0.05% sodium azide	100 ug
N1035-25UG	0.5 mg/ml in 1X PBS with 0.1 mg/ml BSA (US sourced), 0.05% sodium azide	25 ug

[Bulk quote request](#)

Species Reactivity	Human, Mouse
Format	Purified
Host	Rabbit
Clonality	Polyclonal (rabbit origin)
Isotype	Rabbit IgG
Purity	Protein A affinity chromatography
Buffer	1X PBS, pH 7.4
Gene ID	6689
Applications	Western Blot : 4-8ug/ml
Limitations	This SPIB antibody is available for research use only.



Western blot testing of human samples with SPIB antibody at 4ug/ml.

Description

SPIB is a transcription factor in the Ets family. It is found in lymphoid cells and not in monocytes or myeloid cells. SPIB is a regulator of pDC development via its interaction with ID2, E2-2 and BCL2-A1. It promotes E2-2 activity and suppresses Id2 expression to enhance pDC development. It also promotes pDC survival by activation of the antiapoptotic gene BCL2-A1.

Application Notes

Provided assay concentrations are suggestions only, antibody titration may be required for optimal results.

Immunogen

A recombinant protein fragment from the C-terminal half of SPIB was used as the immunogen for this antibody.

Storage

Aliquot and store frozen at -20oC or colder. Avoid repeated freeze-thaw cycles.

Alternate Names

SPI B