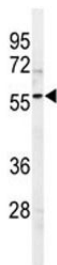


SPHK1 Antibody (F40149)

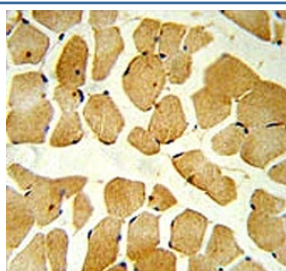
Catalog No.	Formulation	Size
F40149-0.4ML	In 1X PBS, pH 7.4, with 0.09% sodium azide	0.4 ml
F40149-0.08ML	In 1X PBS, pH 7.4, with 0.09% sodium azide	0.08 ml

[Bulk quote request](#)

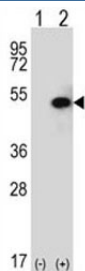
Availability	1-3 business days
Species Reactivity	Human
Format	Purified
Host	Rabbit
Clonality	Polyclonal (rabbit origin)
Isotype	Rabbit Ig
Purity	Purified
UniProt	Q9NYA1
Applications	Western Blot : 1:1000 IHC (Paraffin) : 1:50-1:100 Flow Cytometry : 1:10-1:50
Limitations	This SPHK1 antibody is available for research use only.



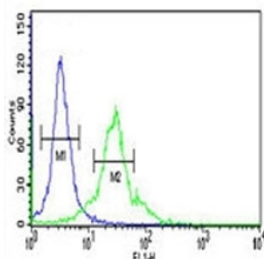
Western blot analysis of SPHK1 antibody and 293 lysate. Predicted molecular weight: ~43/51/44kDa (isoforms 1/2/3).



SPHK1 antibody IHC analysis in formalin fixed and paraffin embedded skeletal muscle.



Western blot analysis of SPHK1 antibody and 293 cell lysate (2 ug/lane) either nontransfected (Lane 1) or transiently transfected (2) with the SPHK1 gene. Predicted molecular weight: ~43/51/44kDa (isoforms 1/2/3).



SPHK1 antibody flow cytometric analysis of 293 cells (right histogram) compared to a negative control cell (left histogram). FITC-conjugated goat-anti-rabbit secondary Ab was used for the analysis.

Description

SPHK1 is a novel lipid messenger with both intracellular and extracellular functions. Intracellularly, it regulates proliferation and survival, and extracellularly, it is a ligand for EDG1 (MIM 601974). Various stimuli increase cellular levels of SPP by activation of sphingosine kinase (SPHK), the enzyme that catalyzes the phosphorylation of sphingosine. Competitive inhibitors of SPHK block formation of SPP and selectively inhibit cellular proliferation induced by a variety of factors, including platelet-derived growth factor (e.g., MIM 173430) and serum.

Application Notes

Titration of the SPHK1 antibody may be required due to differences in protocols and secondary/substrate sensitivity.

Immunogen

A portion of amino acids 313-343 from the human protein was used as the immunogen for this SPHK1 antibody.

Storage

Aliquot the SPHK1 antibody and store frozen at -20°C or colder. Avoid repeated freeze-thaw cycles.