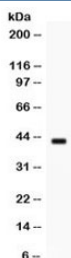


Sp5 Antibody (R32265)

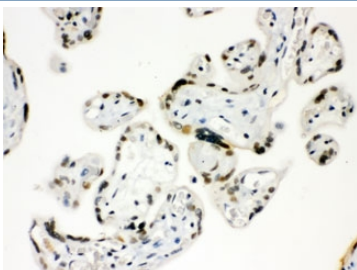
Catalog No.	Formulation	Size
R32265	0.5mg/ml if reconstituted with 0.2ml sterile DI water	100 ug

[Bulk quote request](#)

Availability	1-3 business days
Species Reactivity	Human
Format	Antigen affinity purified
Host	Rabbit
Clonality	Polyclonal (rabbit origin)
Isotype	Rabbit IgG
Purity	Antigen affinity
Buffer	Lyophilized from 1X PBS with 2.5% BSA and 0.025% sodium azide
UniProt	Q6BEB4
Localization	Nuclear
Applications	Western Blot : 0.1-0.5ug/ml Immunohistochemistry (FFPE) : 0.5-1ug/ml
Limitations	This Sp5 antibody is available for research use only.



Western blot testing of human MCF7 cell lysate with Sp5 antibody. Expected/observed molecular weight ~42 kDa.



IHC testing of FFPE human placenta with Sp5 antibody. HIER: Boil the paraffin sections in pH 6, 10mM citrate buffer for 20 minutes and allow to cool prior to staining.

Description

Sp5 is mapped to 2q31.1. It is a member of the Sp family of zinc finger transcription factors. Like other family members, the Sp5 protein contains a Cys2His2 zinc finger DNA binding domain at the C-terminus. Elevated expression of Sp5 has been noted in several human tumors including hepatocellular carcinoma, gastric cancer and colon cancer.

Application Notes

Optimal dilution of the Sp5 antibody should be determined by the researcher.

Immunogen

Amino acids DFAQYQSQIAALLQTKAPLAATARRCRRRCR of human Sp5 were used as the immunogen for the Sp5 antibody.

Storage

After reconstitution, the Sp5 antibody can be stored for up to one month at 4oC. For long-term, aliquot and store at -20oC. Avoid repeated freezing and thawing.