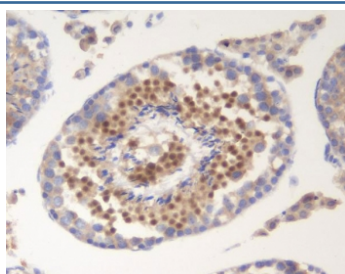


SOX6 Antibody (RQ5840)

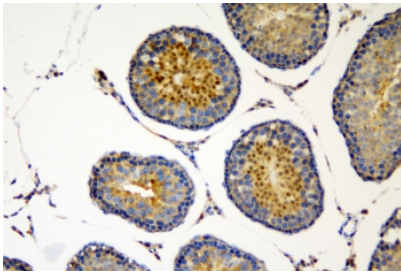
Catalog No.	Formulation	Size
RQ5840	0.5mg/ml if reconstituted with 0.2ml sterile DI water	100 ug

Bulk quote request

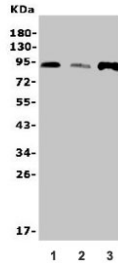
Availability	1-3 business days
Species Reactivity	Human, Mouse
Format	Antigen affinity purified
Host	Rabbit
Clonality	Polyclonal (rabbit origin)
Isotype	Rabbit IgG
Purity	Affinity purified
Buffer	Lyophilized from 1X PBS with 2% Trehalose and 0.025% sodium azide
UniProt	P35712
Localization	Nuclear
Applications	Western Blot : 0.5-1ug/ml Immunohistochemistry : 1-2ug/ml Flow Cytometry : 1-3ug/million cells Direct ELISA : 0.1-0.5ug/ml
Limitations	This SOX6 antibody is available for research use only.



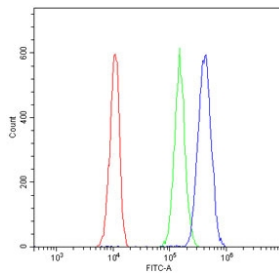
IHC staining of FFPE mouse testis with SOX6 antibody. HIER: boil tissue sections in pH8 EDTA for 20 min and allow to cool before testing.



IHC staining of FFPE rat testis with SOX6 antibody. HIER: boil tissue sections in pH8 EDTA for 20 min and allow to cool before testing.



Western blot testing of human 1) placenta, 2) Caco-2 and 3) U-2 OS lysate with SOX6 antibody. Predicted molecular weight ~92 kDa.



Flow cytometry testing of human A549 cells with SOX6 antibody at 1ug/million cells (blocked with goat sera); Red=cells alone, Green=isotype control, Blue= SOX6 antibody.

Description

Transcription factor SOX-6 is a protein that in humans is encoded by the SOX6 gene. This gene encodes a member of the D subfamily of sex determining region y-related transcription factors that are characterized by a conserved DNA-binding domain termed the high mobility group box and by their ability to bind the minor groove of DNA. The encoded protein is a transcriptional activator that is required for normal development of the central nervous system, chondrogenesis and maintenance of cardiac and skeletal muscle cells. The encoded protein interacts with other family members to cooperatively activate gene expression. Alternative splicing results in multiple transcript variants.

Application Notes

Optimal dilution of the SOX6 antibody should be determined by the researcher.

Immunogen

Amino acids DQDTVMKAIQEARKMREIQIREQQQQ from the human protein were used as the immunogen for the SOX6 antibody.

Storage

After reconstitution, the SOX6 antibody can be stored for up to one month at 4°C. For long-term, aliquot and store at -20°C. Avoid repeated freezing and thawing.

