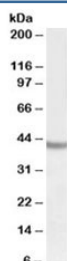


## SOX3 Antibody (R33368)

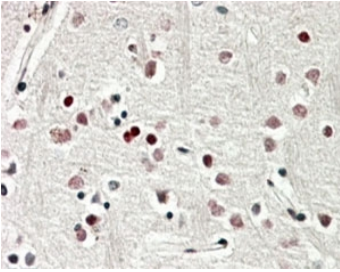
Catalog No.	Formulation	Size
R33368-100UG	0.5 mg/ml in 1X TBS, pH7.3, with 0.5% BSA (US sourced) and 0.02% sodium azide	100 ug

[Bulk quote request](#)

Availability	1-3 business days
Species Reactivity	Human
Predicted Reactivity	Mouse, Rat, Dog
Format	Antigen affinity purified
Host	Goat
Clonality	Polyclonal (goat origin)
Isotype	Goat Ig
Purity	Antigen affinity
Gene ID	6658
Applications	Western Blot : 0.5-1.5ug/ml Immunohistochemistry (FFPE) : 3-5ug/ml ELISA (peptide) LOD : 1:8000
Limitations	This SOX3 antibody is available for research use only.



Western blot testing of human cerebral cortex lysate with SOX3 antibody at 0.5ug/ml.  
Predicted molecular weight: ~45 kDa.



IHC staining of FFPE human cerebral cortex with SOX3 antibody at 4ug/ml. HIER: steamed with pH6 citrate buffer, AP-staining.

## Description

Additional name(s) for this target protein: SRY (sex determining region Y)-box 3

## Application Notes

Optimal dilution of the SOX3 antibody should be determined by the researcher.

## Immunogen

Amino acids DAASPLPGGRLHGVH were used as the immunogen for this SOX3 antibody.

## Storage

Aliquot and store the SOX3 antibody at -20oC.