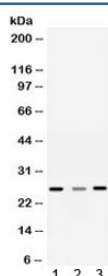


Sorcin Antibody / SRI (R32428)

Catalog No.	Formulation	Size
R32428	0.5mg/ml if reconstituted with 0.2ml sterile DI water	100 ug

Bulk quote request

Availability	1-3 business days
Species Reactivity	Human, Rat
Format	Antigen affinity purified
Host	Rabbit
Clonality	Polyclonal (rabbit origin)
Isotype	Rabbit IgG
Purity	Antigen affinity
Buffer	Lyophilized from 1X PBS with 2.5% BSA and 0.025% sodium azide
UniProt	P30626
Applications	Western Blot : 0.1-0.5ug/ml
Limitations	This Sorcin antibody is available for research use only.



Western blot testing of 1) rat liver, 2) rat brain and 3) human SMMC-7721 lysate with Sorcin antibody. Predicted molecular weight ~22 kDa, routinely observed at 22-29 kDa.

Description

Sorcin is a protein that in humans is encoded by the SRI gene. It is mapped to 7q21.1. This gene encodes a calcium-binding protein with multiple E-F hand domains that relocates from the cytoplasm to the sarcoplasmic reticulum in response to elevated calcium levels. In addition to regulating intracellular calcium homeostasis it also modulates excitation-contraction coupling in the heart. Alternative splicing results in multiple transcript variants encoding distinct proteins. Multiple pseudogenes exist for this gene.

Application Notes

Optimal dilution of the Sorcin antibody should be determined by the researcher.

Immunogen

Amino acids TMGFNEFKELWAVLNGWRQHFISFDTDR from the human protein were used as the immunogen for the Sorcin antibody.

Storage

After reconstitution, the Sorcin antibody can be stored for up to one month at 4oC. For long-term, aliquot and store at -20oC. Avoid repeated freezing and thawing.

References (1)