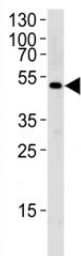


## SOCS4 Antibody (F41736)

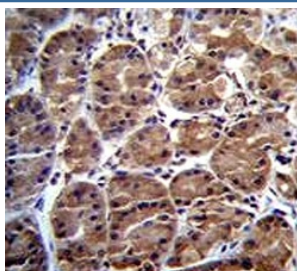
Catalog No.	Formulation	Size
F41736-0.4ML	In 1X PBS, pH 7.4, with 0.09% sodium azide	0.4 ml
F41736-0.08ML	In 1X PBS, pH 7.4, with 0.09% sodium azide	0.08 ml

[Bulk quote request](#)

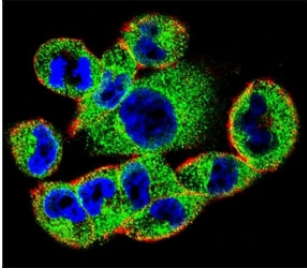
<b>Availability</b>	1-3 business days
<b>Species Reactivity</b>	Human
<b>Format</b>	Antigen affinity purified
<b>Host</b>	Rabbit
<b>Clonality</b>	Polyclonal (rabbit origin)
<b>Isotype</b>	Rabbit Ig
<b>Purity</b>	Antigen affinity
<b>UniProt</b>	Q8WXH5
<b>Applications</b>	Western Blot : 1:1000 IHC (Paraffin) : 1:10-1:50 Immunofluorescence : 1:10-1:50
<b>Limitations</b>	This SOCS4 antibody is available for research use only.



Western blot analysis of lysate from MCF-7 cell line using SOCS4 antibody diluted at 1:1000 for each lane. Predicted/observed molecular weight ~51kDa.



SOCS4 antibody immunohistochemistry analysis in formalin fixed and paraffin embedded human stomach tissue.



Confocal immunofluorescent analysis of SOCS4 antibody with A2058 cells followed by Alexa Fluor 488-conjugated goat anti-rabbit IgG (green). Actin filaments have been labeled with Alexa Fluor 555 Phalloidin (red). DAPI was used as a nuclear counterstain (blue).

## Description

SOCS family proteins form part of a classical negative feedback system that regulates cytokine signal transduction. Substrate-recognition component of a SCF-like ECS (Elongin BC-CUL2/5-SOCS-box protein) E3 ubiquitin-protein ligase complex which mediates the ubiquitination and subsequent proteasomal degradation of target proteins. Inhibits EGF signaling by mediating the degradation of the Tyr-phosphorylated EGF receptor/EGFR. [UniProt]

## Application Notes

Titration of the SOCS4 antibody may be required due to differences in protocols and secondary/substrate sensitivity.

## Immunogen

A portion of amino acids 227-254 from the human protein was used as the immunogen for this SOCS4 antibody.

## Storage

Aliquot the SOCS4 antibody and store frozen at -20oC or colder. Avoid repeated freeze-thaw cycles.