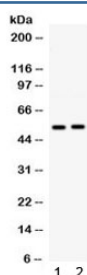


## SMYD3 Antibody (R32321)

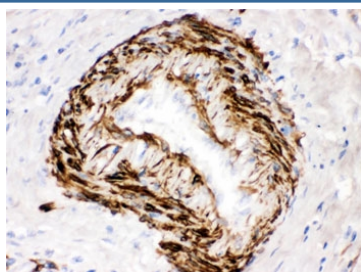
Catalog No.	Formulation	Size
R32321	0.5mg/ml if reconstituted with 0.2ml sterile DI water	100 ug

**Bulk quote request**

<b>Availability</b>	1-3 business days
<b>Species Reactivity</b>	Human
<b>Format</b>	Antigen affinity purified
<b>Host</b>	Rabbit
<b>Clonality</b>	Polyclonal (rabbit origin)
<b>Isotype</b>	Rabbit IgG
<b>Purity</b>	Antigen affinity
<b>Buffer</b>	Lyophilized from 1X PBS with 2.5% BSA and 0.025% sodium azide
<b>UniProt</b>	Q9H7B4
<b>Localization</b>	Cytoplasmic
<b>Applications</b>	Western Blot : 0.1-0.5ug/ml IHC (FFPE) : 0.5-1ug/ml
<b>Limitations</b>	This SMYD3 antibody is available for research use only.



Western blot testing of human 1) HeLa and 2) COLO320 cell lysate with SMYD3 antibody. Expected molecular weight ~49 kDa.



IHC testing of FFPE human intestinal cancer tissue with SMYD3 antibody. HIER: Boil the paraffin sections in pH 6, 10mM citrate buffer for 20 minutes and allow to cool prior to staining.

## Description

SET and MYND domain-containing protein 3 is a protein that in humans is encoded by the SMYD3 gene. The International Radiation Hybrid Mapping Consortium mapped the SMYD3 gene to chromosome 1. This gene encodes a histone methyltransferase which functions in RNA polymerase II complexes by an interaction with a specific RNA helicase. Multiple transcript variants encoding different isoforms have been found for this gene.

## Application Notes

Optimal dilution of the SMYD3 antibody should be determined by the researcher.

## Immunogen

Amino acids QAMKNLRLAFDIMRVTHGREHSLIEDLILLLEECDANIRAS of human SMYD3 were used as the immunogen for the SMYD3 antibody.

## Storage

After reconstitution, the SMYD3 antibody can be stored for up to one month at 4°C. For long-term, aliquot and store at -20°C. Avoid repeated freezing and thawing.