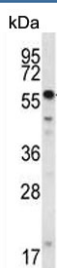


## SMYD2 Antibody / KMT3C (F54544)

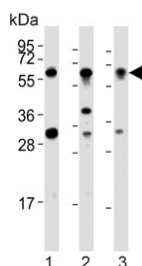
Catalog No.	Formulation	Size
F54544-0.4ML	In 1X PBS, pH 7.4, with 0.09% sodium azide	0.4 ml
F54544-0.08ML	In 1X PBS, pH 7.4, with 0.09% sodium azide	0.08 ml

**Bulk quote request**

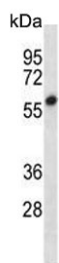
<b>Availability</b>	1-3 business days
<b>Species Reactivity</b>	Human, Mouse
<b>Format</b>	Purified
<b>Clonality</b>	Polyclonal (rabbit origin)
<b>Isotype</b>	Rabbit Ig
<b>Purity</b>	Purified
<b>UniProt</b>	Q9NRG4
<b>Applications</b>	Western Blot : 1:500-1:2000
<b>Limitations</b>	This SMYD2 antibody is available for research use only.



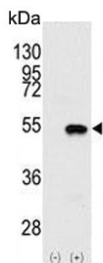
Western blot testing of human NCI-H292 cell lysate with SMYD2 antibody. Predicted molecular weight ~50 kDa.



Western blot testing of 1) human HT-1080, 2) mouse heart and 3) human HeLa cell lysate with SMYD2 antibody. Predicted molecular weight ~50 kDa.



Western blot testing of mouse Neuro-2a cell lysate with SMYD2 antibody. Predicted molecular weight ~50 kDa.



Western blot testing of 1) non-transfected and 2) transfected 293 cell lysate with SMYD2 antibody. Predicted molecular weight ~50 kDa.

## Description

SET domain-containing proteins, such as SMYD2, catalyze lysine methylation.[OMIM].

## Application Notes

The stated application concentrations are suggested starting points. Titration of the SMYD2 antibody may be required due to differences in protocols and secondary/substrate sensitivity.

## Immunogen

A portion of amino acids 120-152 from the human protein was used as the immunogen for the SMYD2 antibody.

## Storage

Aliquot the SMYD2 antibody and store frozen at -20oC or colder. Avoid repeated freeze-thaw cycles.