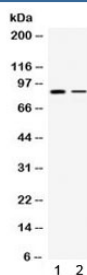


## SMURF1 Antibody (R32324)

Catalog No.	Formulation	Size
R32324	0.5mg/ml if reconstituted with 0.2ml sterile DI water	100 ug

[Bulk quote request](#)

<b>Availability</b>	1-3 business days
<b>Species Reactivity</b>	Human, Rat
<b>Format</b>	Antigen affinity purified
<b>Host</b>	Rabbit
<b>Clonality</b>	Polyclonal (rabbit origin)
<b>Isotype</b>	Rabbit IgG
<b>Purity</b>	Antigen affinity
<b>Buffer</b>	Lyophilized from 1X PBS with 2.5% BSA and 0.025% sodium azide
<b>UniProt</b>	Q9HCE7
<b>Applications</b>	Western Blot : 0.1-0.5ug/ml
<b>Limitations</b>	This SMURF1 antibody is available for research use only.



Western blot testing of 1) rat brain and 2) MCF7 lysate with SMURF1 antibody. Expected/observed molecular weight ~86 kDa.

## Description

E3 ubiquitin-protein ligase SMURF1 is an enzyme that in humans is encoded by the SMURF1 gene. It is mapped to 7q22.1. This gene encodes a ubiquitin ligase that is specific for receptor-regulated SMAD proteins in the bone morphogenetic protein (BMP) pathway. This protein plays a key roll in the regulation of cell motility, cell signalling, and cell polarity. Alternative splicing results in multiple transcript variants encoding different isoforms.

## Application Notes

Optimal dilution of the SMURF1 antibody should be determined by the researcher.

## **Immunogen**

Amino acids DHNNRRTTQFTDPRLHHIMNHQCQLKE of human SMURF1 were used as the immunogen for the SMURF1 antibody.

## **Storage**

After reconstitution, the SMURF1 antibody can be stored for up to one month at 4°C. For long-term, aliquot and store at -20°C. Avoid repeated freezing and thawing.