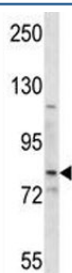


SMO Antibody (F44685)

Catalog No.	Formulation	Size
F44685-0.4ML	In 1X PBS, pH 7.4, with 0.09% sodium azide	0.4 ml
F44685-0.08ML	In 1X PBS, pH 7.4, with 0.09% sodium azide	0.08 ml

[Bulk quote request](#)

Availability	1-3 business days
Species Reactivity	Human
Format	Antigen affinity purified
Host	Rabbit
Clonality	Polyclonal (rabbit origin)
Isotype	Rabbit Ig
Purity	Antigen affinity
UniProt	Q99835
Applications	Western Blot : 1:1000
Limitations	This SMO antibody is available for research use only.



SMO antibody western blot analysis in HepG2 lysate. Predicted molecular weight: ~86kDa.

Description

The protein encoded by this gene is a G protein-coupled receptor that interacts with the patched protein, a receptor for hedgehog proteins. The encoded protein transduces signals to other proteins after activation by a hedgehog protein/patched protein complex.

Application Notes

Titration of the SMO antibody may be required due to differences in protocols and secondary/substrate sensitivity.

Immunogen

A portion of amino acids 539-567 from the human protein was used as the immunogen for this SMO antibody.

Storage

Aliquot the SMO antibody and store frozen at -20oC or colder. Avoid repeated freeze-thaw cycles.