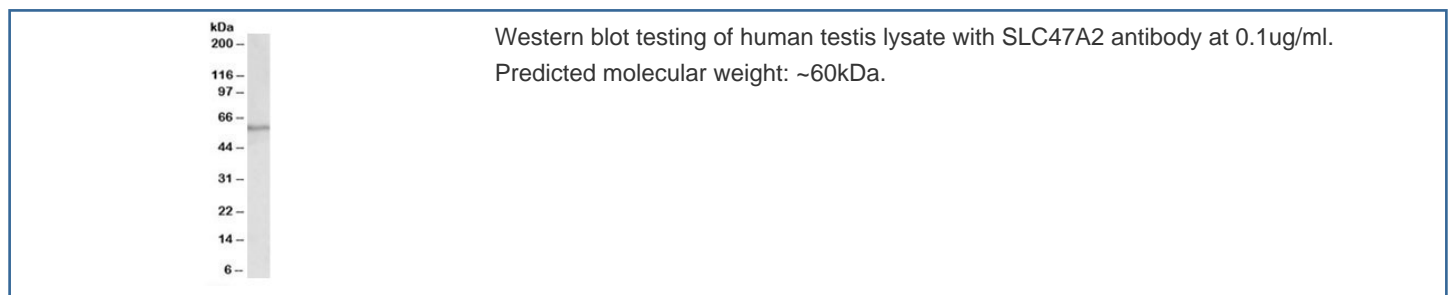


## SLC47A2 Antibody (R35420)

Catalog No.	Formulation	Size
R35420-100UG	0.5 mg/ml in 1X TBS, pH7.3, with 0.5% BSA (US sourced) and 0.02% sodium azide	100 ug

[Bulk quote request](#)

<b>Availability</b>	1-3 business days
<b>Species Reactivity</b>	Human
<b>Format</b>	Antigen affinity purified
<b>Clonality</b>	Polyclonal (goat origin)
<b>Isotype</b>	Goat Ig
<b>Purity</b>	Antigen affinity
<b>Gene ID</b>	146802
<b>Applications</b>	Western Blot : 0.1-0.3ug/ml ELISA (peptide) LOD : 1:32000
<b>Limitations</b>	This SLC47A2 antibody is available for research use only.



### Description

Additional name(s) for this target protein: Solute carrier family 47 member 2, MATE2, multidrug and toxin extrusion 2; SLC47A2

### Application Notes

Optimal dilution of the SLC47A2 antibody should be determined by the researcher.

### Immunogen

Amino acids QRAESTATRPGPEK were used as the immunogen for this SLC47A2 antibody.

## **Storage**

Aliquot and store the SLC47A2 antibody at -20oC.