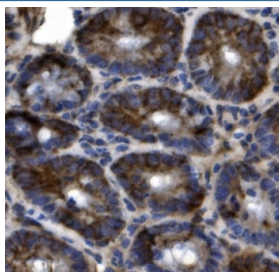


Slc44a2 Antibody / Ctl2 (RQ6438)

Catalog No.	Formulation	Size
RQ6438	0.5mg/ml if reconstituted with 0.2ml sterile DI water	100 ug

Bulk quote request

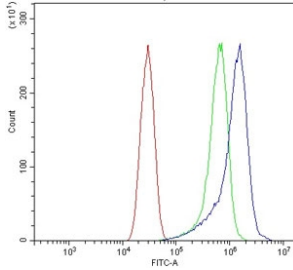
Availability	1-3 business days
Species Reactivity	Mouse, Rat
Format	Purified
Host	Rabbit
Clonality	Polyclonal (rabbit origin)
Isotype	Rabbit IgG
Purity	Antigen affinity purified
Buffer	Lyophilized from 1X PBS with 2% Trehalose
UniProt	Q8BY89
Applications	Western Blot : 0.5-1ug/ml Immunohistochemistry (FFPE) : 2-5ug/ml Flow Cytometry : 1-3ug/million cells Direct ELISA : 0.1-0.5ug/ml
Limitations	This Slc44a2 antibody is available for research use only.



IHC staining of FFPE mouse intestine tissue with Slc44a2 antibody. HIER: boil tissue sections in pH8 EDTA for 20 min and allow to cool before testing.



Western blot testing of mouse lung tissue lysate with Slc44a2 antibody. Predicted molecular weight ~80 kDa.



Flow cytometry testing of mouse HEPA1-6 cells with Slc44a2 antibody at 1ug/million cells (blocked with goat sera); Red=cells alone, Green=isotype control, Blue= Slc44a2 antibody.

Description

Choline transporter-like protein 2 is a protein that in humans is encoded by the SLC44A2 gene. CTL2 is a multi-pass membrane protein expressed in cells of the inner ear. CTL2 is a possible candidate for autoimmune hearing loss in humans. Present in supporting cells of the inner ear (at protein level). Only isoform 3 is expressed in inner ear vestibular tissue.

Application Notes

Optimal dilution of the Slc44a2 antibody should be determined by the researcher.

Immunogen

Recombinant mouse protein (amino acids M1-S706) was used as the immunogen for the Slc44a2 antibody.

Storage

After reconstitution, the Slc44a2 antibody can be stored for up to one month at 4oC. For long-term, aliquot and store at -20oC. Avoid repeated freezing and thawing.