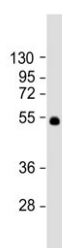


## SLC29A1 Antibody / Solute carrier family 29 member 1 / ENT1 (F55064)

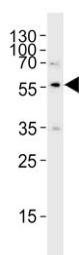
Catalog No.	Formulation	Size
F55064-0.2ML	In 1X PBS, pH 7.4, with 0.09% sodium azide	0.2 ml
F55064-0.05ML	In 1X PBS, pH 7.4, with 0.09% sodium azide	0.05 ml

[Bulk quote request](#)

<b>Availability</b>	1-3 business days
<b>Species Reactivity</b>	Human, Mouse
<b>Format</b>	Purified
<b>Host</b>	Rabbit
<b>Clonality</b>	Polyclonal (rabbit origin)
<b>Isotype</b>	Rabbit Ig
<b>Purity</b>	Antigen affinity purified
<b>UniProt</b>	Q99808
<b>Applications</b>	Western Blot : 1:1000-1:2000
<b>Limitations</b>	This SLC29A1 antibody is available for research use only.



Western blot testing of mouse lung tissue lysate with SLC29A1 antibody. Predicted molecular weight ~50 kDa.



Western blot testing of human HL60 cell lysate with SLC29A1 antibody. Predicted molecular weight ~50 kDa.

## Description

SLC29A1 (Solute carrier family 29 member 1), also known as the Equilibrative nucleoside transporter 1 (ENT1), is a protein that plays a role in the transport of nucleosides across cell membranes. Nucleosides are essential components of DNA and RNA, and their transport into cells is crucial for various cellular processes, including DNA replication and protein synthesis. Recent research has also suggested that SLC29A1 protein may play a role in regulating the immune response and inflammation. Studies have shown that altered expression of SLC29A1 protein can lead to dysregulation of immune cells, contributing to inflammatory disorders and autoimmune diseases. Additionally, SLC29A1 protein has been implicated in cancer progression. Studies have shown that increased expression of SLC29A1 protein is associated with enhanced cell proliferation and survival in various cancer types. This suggests that targeting SLC29A1 protein could be a promising therapeutic strategy for cancer treatment.

## Application Notes

Titration of the SLC29A1 antibody may be required due to differences in protocols and secondary/substrate sensitivity.

## Immunogen

A portion of amino acids 234-263 from the human protein was used as the immunogen for the SLC29A1 antibody.

## Storage

Aliquot the SLC29A1 antibody and store frozen at -20oC or colder. Avoid repeated freeze-thaw cycles.