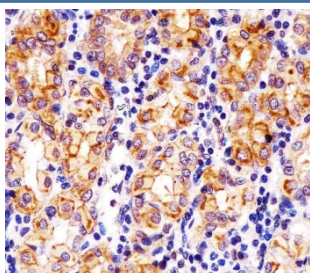


SLC22A2 Antibody (F54507)

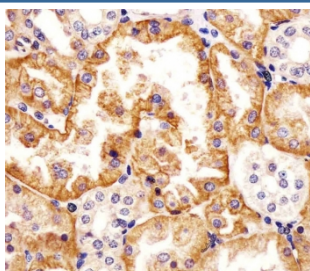
Catalog No.	Formulation	Size
F54507-0.2ML	In 1X PBS, pH 7.4, with 0.09% sodium azide	0.2 ml
F54507-0.05ML	In 1X PBS, pH 7.4, with 0.09% sodium azide	0.05 ml

[Bulk quote request](#)

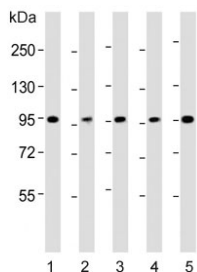
Availability	1-3 business days
Species Reactivity	Human
Format	Purified
Clonality	Polyclonal (rabbit origin)
Isotype	Rabbit Ig
Purity	Antigen affinity purified
UniProt	O15244
Applications	Western Blot : 1:500-1:2000 Immunohistochemistry (FFPE) : 1:25 Flow Cytometry : 1:25 (1x10 ⁶ cells)
Limitations	This SLC22A2 antibody is available for research use only.



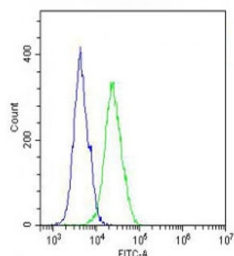
IHC testing of FFPE human stomach tissue with SLC22A2 antibody. HIER: steam section in pH6 citrate buffer for 20 min and allow to cool prior to staining.



IHC testing of FFPE human kidney tissue with SLC22A2 antibody. HIER: steam section in pH6 citrate buffer for 20 min and allow to cool prior to staining.



Western blot testing of human 1) HEK293, 2) A431, 3) HepG2, 4) Jurkat and 5) Raji cell lysate with SLC22A2 antibody. Expected molecular weight: 55-100 kDa depending on glycosylation level.



Flow cytometry testing of fixed and permeabilized human A431 cells with SLC22A2 antibody; Blue=isotype control, Green= SLC22A2 antibody.

Description

Mediates tubular uptake of organic compounds from circulation. Mediates the influx of agmatine, dopamine, noradrenaline (norepinephrine), serotonin, choline, famotidine, ranitidine, histamin, creatinine, amantadine, memantine, acriflavine, 4-[4-(dimethylamino)-styryl]-N-methylpyridinium ASP, amiloride, metformin, N-1-methylnicotinamide (NMN), tetraethylammonium (TEA), 1-methyl-4-phenylpyridinium (MPP), cimetidine, cisplatin and oxaliplatin. Cisplatin may develop a nephrotoxic action. Transport of creatinine is inhibited by fluoroquinolones such as DX-619 and LVFX. This transporter is a major determinant of the anticancer activity of oxaliplatin and may contribute to antitumor specificity.

Application Notes

The stated application concentrations are suggested starting points. Titration of the SLC22A2 antibody may be required due to differences in protocols and secondary/substrate sensitivity.

Immunogen

Recombinant human protein was used as the immunogen for the SLC22A2 antibody.

Storage

Aliquot the SLC22A2 antibody and store frozen at -20oC or colder. Avoid repeated freeze-thaw cycles.