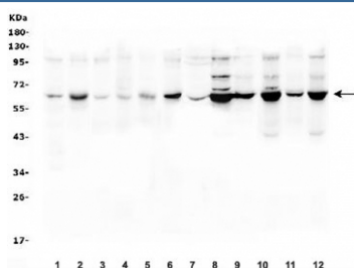


SLC19A1 Antibody (R32093)

Catalog No.	Formulation	Size
R32093	0.5mg/ml if reconstituted with 0.2ml sterile DI water	100 ug

Bulk quote request

Availability	1-3 business days
Species Reactivity	Human, Mouse, Rat, Monkey
Format	Antigen affinity purified
Host	Rabbit
Clonality	Polyclonal (rabbit origin)
Isotype	Rabbit IgG
Purity	Antigen affinity
Buffer	Lyophilized from 1X PBS with 2.5% BSA and 0.025% sodium azide
UniProt	P41440
Applications	Western Blot : 0.5-1ug/ml
Limitations	This SLC19A1 antibody is available for research use only.



Western blot testing of 1) rat brain, 2) rat ovary, 3) mouse brain, 4) mouse testis, 5) mouse ovary, 6) mouse NIH3T3, 7) human placenta, 8) human HEK293, 9) monkey COS-7, 10) human PC-3, 11) human 22RV1 and 12) human K562 lysate with SLC19A1 antibody. Predicted molecular weight ~65 kDa.

Description

Solute carrier family 19 (folate transporter), member 1, also known as SLC19A1 or RFC1, is a protein which in humans is encoded by the SLC19A1 gene. Transport of folate compounds into mammalian cells can occur via receptor-mediated or carrier-mediated mechanisms. A functional coordination between these 2 mechanisms has been proposed to be the method of folate uptake in certain cell types. Methotrexate (MTX) is an antifolate chemotherapeutic agent that is actively transported by the carrier-mediated uptake system. And RFC1 plays a role in maintaining intracellular concentrations of folate.

Application Notes

Optimal dilution of the SLC19A1 antibody should be determined by the researcher.

Immunogen

Amino acids FLKRPKRSLFFNRDDRGRCETSASELERMN of human SLC19A1 were used as the immunogen for the SLC19A1 antibody.

Storage

After reconstitution, the SLC19A1 antibody can be stored for up to one month at 4°C. For long-term, aliquot and store at -20°C. Avoid repeated freezing and thawing.