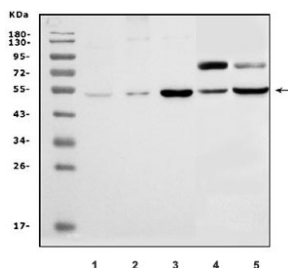


## Slc14a1 Antibody / Ut-b (RQ6116)

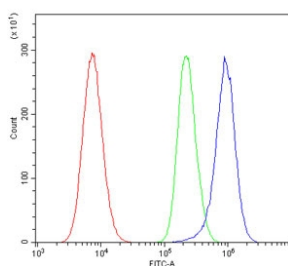
Catalog No.	Formulation	Size
RQ6116	0.5mg/ml if reconstituted with 0.2ml sterile DI water	100 ug

[Bulk quote request](#)

<b>Availability</b>	1-3 business days
<b>Species Reactivity</b>	Mouse, Rat
<b>Format</b>	Antigen affinity purified
<b>Host</b>	Rabbit
<b>Clonality</b>	Polyclonal (rabbit origin)
<b>Isotype</b>	Rabbit IgG
<b>Purity</b>	Affinity purified
<b>Buffer</b>	Lyophilized from 1X PBS with 2% Trehalose and 0.025% sodium azide
<b>UniProt</b>	Q8VHL0
<b>Applications</b>	Western Blot : 1-2ug/ml Flow Cytometry : 1-3ug/million cells
<b>Limitations</b>	This Slc14a1 antibody is available for research use only.



Western blot testing of 1) mouse kidney, 2) mouse skeletal muscle, 3) mouse heart, 4) rat heart and 5) rat kidney lysate with Slc14a1 antibody. Predicted molecular weight: 42-54 kDa depending on glycosylation level.



Flow cytometry testing of mouse HEPA1-6 cells with Slc14a1 antibody at 1ug/million cells (blocked with goat sera); Red=cells alone, Green=isotype control, Blue= Slc14a1 antibody.

## Description

Urea transporter 1 is a protein that in humans is encoded by the SLC14A1 gene. The SLC14A1 codes for a urea transporter (UTB) that is expressed in erythrocytes and kidney. SLC14A2 and SLC14A1 constitute solute carrier family 14. UTB proteins constitute the Kidd antigen system.

## Application Notes

Optimal dilution of the Slc14a1 antibody should be determined by the researcher.

## Immunogen

Amino acids DMKEFANWLKDKPVVLQFMD from the mouse protein were used as the immunogen for the Slc14a1 antibody.

## Storage

After reconstitution, the Slc14a1 antibody can be stored for up to one month at 4oC. For long-term, aliquot and store at -20oC. Avoid repeated freezing and thawing.