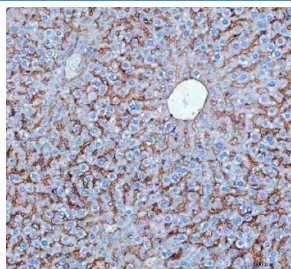


## SLC10A1 Antibody (R30755)

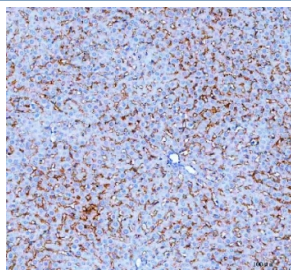
Catalog No.	Formulation	Size
R30755	0.5mg/ml if reconstituted with 0.2ml sterile DI water	100 ug

**Bulk quote request**

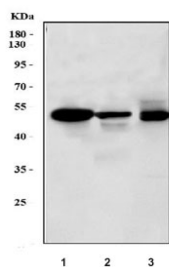
<b>Availability</b>	1-3 business days
<b>Species Reactivity</b>	Human, Mouse, Rat
<b>Format</b>	Antigen affinity purified
<b>Host</b>	Rabbit
<b>Clonality</b>	Polyclonal (rabbit origin)
<b>Isotype</b>	Rabbit IgG
<b>Purity</b>	Antigen affinity
<b>Buffer</b>	Lyophilized from 1X PBS with 2% Trehalose
<b>UniProt</b>	Q14973
<b>Localization</b>	Membrane
<b>Applications</b>	Western Blot : 0.5-1ug/ml Immunohistochemistry (FFPE) : 2-5ug/ml
<b>Limitations</b>	This SLC10A1 antibody is available for research use only.



IHC staining of FFPE human mouse liver tissue with SLC10A1 antibody. HIER: boil tissue sections in pH8 EDTA for 20 min and allow to cool before testing.



IHC staining of FFPE human rat liver tissue with SLC10A1 antibody. HIER: boil tissue sections in pH8 EDTA for 20 min and allow to cool before testing.



Western blot testing of 1) human liver, 2) rat liver and 3) mouse liver lysate with SLC10A1 antibody. Expected molecular weight: 38~56 kDa.

## Description

SLC10A1 (Solute carrier family 10 (sodium/bile acid cotransporter family), member 1), also called NTCP or NTCP1, is found in the basolateral membranes of hepatocytes, which is also involved in the reabsorption of bile acids. The SLC10A1 gene is mapped on 14q24.2 and contains 5 exons and spans about 23 kb. Like other sodium/bile acid transporters, SLC10A1 contains an exoplasmic N terminus, an odd number of transmembrane regions, and a cytoplasmic C terminus. Two amphipathic sequences are critical for intramolecular interactions and for proper trafficking of SLC10A1 to the plasma membrane. Injection of in vitro transcribed NTCP cRNA into *Xenopus* oocytes resulted in the expression of Na(+)-dependent taurocholate uptake. NTCP-mediated taurocholate uptake in oocytes was inhibited by all major bile acid derivatives and by bromosulphophthalein.

## Application Notes

Titration of the SLC10A1 antibody may be required due to differences in protocols and secondary/substrate sensitivity.

## Immunogen

Amino acids 141-154 (YSRGIYDGDLDKDV-human) were used as the immunogen for this SLC10A1 antibody.

## Storage

The lyophilized SLC10A1 antibody can be stored at 4°C to -20°C. After reconstitution, aliquot and store at -20°C. Avoid repeated freezing and thawing.

## References (1)