

SIGLEC5 Antibody (F54705)

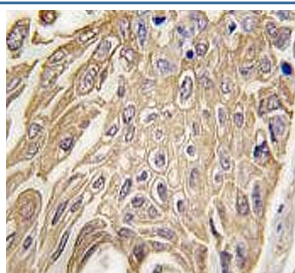
Catalog No.	Formulation	Size
F54705-0.4ML	In 1X PBS, pH 7.4, with 0.09% sodium azide	0.4 ml
F54705-0.08ML	In 1X PBS, pH 7.4, with 0.09% sodium azide	0.08 ml

[Bulk quote request](#)

Availability	1-3 business days
Species Reactivity	Human
Format	Purified
Host	Rabbit
Clonality	Polyclonal (rabbit origin)
Isotype	Rabbit Ig
Purity	Purified
UniProt	O15389
Applications	Western Blot : 1:500-1:2000 Immunohistochemistry (FFPE) : 1:25
Limitations	This SIGLEC5 antibody is available for research use only.

kDa
250
130
95
72
55

Western blot testing of human T-47D cell lysate with SIGLEC5 antibody. Expected molecular weight: 60-110 kDa depending on glycosylation level.



IHC testing of FFPE human lung carcinoma tissue with SIGLEC5 antibody. HIER: steam section in pH6 citrate buffer for 20 min and allow to cool prior to staining.

Description

SIGLEC5 is a putative adhesion molecule that mediates sialic-acid dependent binding to cells. This protein binds equally to alpha2,3-linked and alpha2,6-linked sialic acid. The sialic acid recognition site may be masked by cis interactions with sialic acids on the same cell surface. This molecule is expressed by monocytic/myeloid lineage cells. SIGLEC5 is found at high levels in peripheral blood leukocytes, spleen, bone marrow and at lower levels in lymph node, lung, appendix, placenta, pancreas and thymus. It is expressed by monocytes and neutrophils but absent from leukemic cell lines representing early stages of myelomonocytic differentiation.

Application Notes

The stated application concentrations are suggested starting points. Titration of the SIGLEC5 antibody may be required due to differences in protocols and secondary/substrate sensitivity.

Immunogen

A portion of amino acids 8-39 from the human protein was used as the immunogen for the SIGLEC5 antibody.

Storage

Aliquot the SIGLEC5 antibody and store frozen at -20oC or colder. Avoid repeated freeze-thaw cycles.