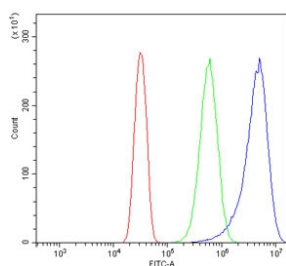


SHISA6 Antibody (RQ6210)

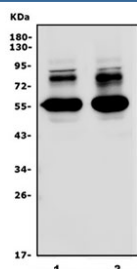
Catalog No.	Formulation	Size
RQ6210	0.5mg/ml if reconstituted with 0.2ml sterile DI water	100 ug

Bulk quote request

Availability	1-3 business days
Species Reactivity	Human, Mouse, Rat
Format	Antigen affinity purified
Host	Rabbit
Clonality	Polyclonal (rabbit origin)
Isotype	Rabbit IgG
Purity	Affinity purified
Buffer	Lyophilized from 1X PBS with 2% Trehalose
UniProt	Q6ZSJ9
Applications	Western Blot : 1-2ug/ml Flow Cytometry : 1-3ug/million cells Direct ELISA : 0.1-0.5ug/ml
Limitations	This SHISA6 antibody is available for research use only.



Flow cytometry testing of human U-2 OS cells with SHISA6 antibody at 1ug/million cells (blocked with goat sera); Red=cells alone, Green=isotype control, Blue= SHISA6 antibody.



Western blot testing of 1) rat brain and 2) mouse brain lysate with SHISA6 antibody. Predicted molecular weight ~56 kDa.

Description

The deduced 551-amino acid human SHISA6 protein has a domain structure typical of SHISA proteins, including an N-terminal signal peptide, followed by a cysteine-rich domain, a transmembrane domain, and a C-terminal proline-rich region. SHISA6 belongs to a SHISA subfamily containing SHISA7, SHISA8, and SHISA9.

Application Notes

Optimal dilution of the SHISA6 antibody should be determined by the researcher.

Immunogen

A human recombinant partial protein (amino acids K253-Y483) was used as the immunogen for the SHISA6 antibody.

Storage

After reconstitution, the SHISA6 antibody can be stored for up to one month at 4oC. For long-term, aliquot and store at -20oC. Avoid repeated freezing and thawing.