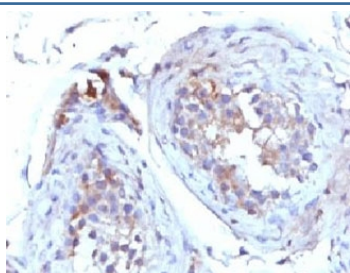


SHBG Antibody [clone TTEB3] (V7152)

Catalog No.	Formulation	Size
V7152-100UG	0.2 mg/ml in 1X PBS with 0.1 mg/ml BSA (US sourced) and 0.05% sodium azide	100 ug
V7152-20UG	0.2 mg/ml in 1X PBS with 0.1 mg/ml BSA (US sourced) and 0.05% sodium azide	20 ug
V7152SAF-100UG	1 mg/ml in 1X PBS; BSA free, sodium azide free	100 ug
V7152IHC-7ML	Prediluted in 1X PBS with 0.1 mg/ml BSA (US sourced) and 0.05% sodium azide; *For IHC use only*	7 ml

[Bulk quote request](#)

Availability	1-3 business days
Species Reactivity	Human
Format	Purified
Host	Mouse
Clonality	Monoclonal (mouse origin)
Isotype	Mouse IgG1
Clone Name	TTEB3
Purity	Protein G affinity chromatography
UniProt	P04278
Localization	Cytoplasmic & extracellular (secreted)
Applications	Immunohistochemistry (FFPE) : 1-2ug/ml for 30 min at RT (1) Prediluted IHC Only Format : incubate for 30 min at RT (2)
Limitations	This SHBG antibody is available for research use only.



IHC testing of FFPE human testicular carcinoma with SHBG antibody (clone TTEB3). Staining of formalin-fixed tissues requires boiling tissue sections in 10mM Tris buffer with 1mM EDTA, pH 9, for 10-20 min followed by cooling at RT for 20 min.

Description

Sex Hormone Binding Globulin, also called Androgen Binding Protein (ABP) and Testosterone-Estradiol-Binding Globulin (TEBG), functions as an androgen transport protein, but may also be involved in receptor mediated processes. Each dimer binds one molecule of steroid. Specific for 5-alpha-dihydrotestosterone, testosterone, and 17-beta-estradiol. Regulates the plasma metabolic clearance rate of steroid hormones by controlling their plasma concentration. [UniProt]

Application Notes

Optimal dilution of the SHBG antibody should be determined by the researcher.

1. The prediluted format is supplied in a dropper bottle and is optimized for use in IHC. After epitope retrieval step (if required), drip mAb solution onto the tissue section and incubate at RT for 30 min.

Immunogen

Recombinant full-length human protein was used as the immunogen for the SHBG antibody.

Storage

Store the SHBG antibody at 2-8oC (with azide) or aliquot and store at -20oC or colder (without azide).