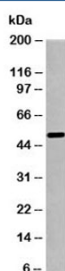


## SGK1 Antibody (N1120)

Catalog No.	Formulation	Size
N1120-100UG	0.5 mg/ml in 1X PBS with 0.1 mg/ml BSA (US sourced), 0.05% sodium azide	100 ug
N1120-25UG	0.5 mg/ml in 1X PBS with 0.1 mg/ml BSA (US sourced), 0.05% sodium azide	25 ug

[Bulk quote request](#)

Species Reactivity	Human
Format	Purified
Clonality	Polyclonal (rabbit origin)
Isotype	Rabbit IgG
Purity	Protein A affinity chromatography
Buffer	1X PBS, pH 7.4
Gene ID	6446
Applications	Western Blot : 1-3ug/ml
Limitations	This <b>SGK1 antibody</b> is available for research use only.



Western blot testing of human pancreas lysate with SGK1 antibody at 1ug/ml.

## Description

SGK1 (Serine/threonine-protein kinase 1) is a member of a serine/threonine subfamily of kinases. This kinase is involved in a wide variety of cellular functions including cell growth, survival and migration as well as a wide variety of cellular processes including transcription (Foxo3A, b-catenin, NF-kB, and p53), stress response and apoptosis. SGK1 also participates in neuronal function. Expression of SGK1 is stimulated by amphetamine, LSD and neuronal injury, it stimulates dendrite growth, is important in long term memory, fear-conditioning/spatial/novel object recognition learning and is likely involved in the pathophysiology of Alzheimer's disease.

## Application Notes

Provided assay concentrations are suggestions only, antibody titration may be required for optimal results.

## **Immunogen**

A recombinant protein fragment from the C-terminal region of human SGK1 was used as the immunogen for this antibody.

## **Storage**

Aliquot the SGK1 antibody and store frozen at -20oC or colder. Avoid repeated freeze-thaw cycles.

## **Alternate Names**

Serum and glucocorticoid regulated kinase antibody