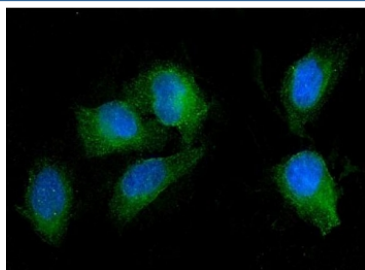


## SEZ6L Antibody (RQ5836)

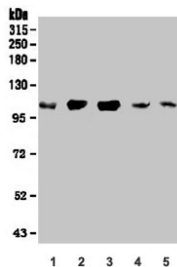
Catalog No.	Formulation	Size
RQ5836	0.5mg/ml if reconstituted with 0.2ml sterile DI water	100 ug

**Bulk quote request**

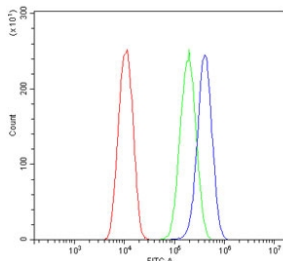
<b>Availability</b>	1-3 business days
<b>Species Reactivity</b>	Human, Mouse, Rat
<b>Format</b>	Antigen affinity purified
<b>Host</b>	Rabbit
<b>Clonality</b>	Polyclonal (rabbit origin)
<b>Isotype</b>	Rabbit IgG
<b>Purity</b>	Affinity purified
<b>Buffer</b>	Lyophilized from 1X PBS with 2% Trehalose
<b>UniProt</b>	Q9BYH1
<b>Applications</b>	Western Blot : 0.5-1ug/ml Immunofluorescence : 2-4ug/ml Flow Cytometry : 1-3ug/million cells Direct ELISA : 0.1-0.5ug/ml
<b>Limitations</b>	This SEZ6L antibody is available for research use only.



Immunofluorescent staining of FFPE human U-2 OS cells with SEZ6L antibody (green) and DAPI nuclear stain (blue). HIER: steam section in pH6 citrate buffer for 20 min.



Western blot testing of human 1) HEK293, 2) ThP-1, 3) HL-60 4) rat brain and 5) mouse brain lysate with SEZ6L antibody. Expected molecular weight: 112-200 kDa depending on level of glycosylation.



Flow cytometry testing of human U-2 OS cells with SEZ6L antibody at 1ug/million cells (blocked with goat sera); Red=cells alone, Green=isotype control, Blue= SEZ6L antibody.

## Description

Seizure 6-like protein is a protein that in humans is encoded by the SEZ6L gene. SEZ6L (Seizure 6-Like protein; also BSRP-B in rodent) is a 200 kDa member of the SEZ6 family of proteins. It is expressed in the plasma membrane and ER of CNS neurons and lung bronchiolar epithelium, and likely regulates PKC alpha activation. Mature human SEZ6L is a 996 amino acid (aa) type I transmembrane protein. It contains a 930 aa extracellular domain (ECD) (aa 29-958) plus a 45 aa cytoplasmic tail. The ECD shows three CUB domains and five short consensus repeats (SCRs). There are multiple isoforms possible for SEZ6L. One shows a deletion of aa 933-943, and a second shows the same deletion coupled to a Thr substitution for aa 803-867. A third isoform contains a Leu substitution for aa 867-943. An alternative start site is reported at Met228. This start site may occur individually, or be accompanied by a deletion of aa 932-944, the same deletion of aa 932-944 coupled to a Thr substitution for aa 803-867, or a dual deletion of aa 869-945 and 1016-1024. Over aa 29-958, human BSRP-B is 80% aa identical to mouse BSRP-B.

## Application Notes

Optimal dilution of the SEZ6L antibody should be determined by the researcher.

## Immunogen

Recombinant human protein (amino acids E662-E953) was used as the immunogen for the SEZ6L antibody.

## Storage

After reconstitution, the SEZ6L antibody can be stored for up to one month at 4oC. For long-term, aliquot and store at -20oC. Avoid repeated freezing and thawing.