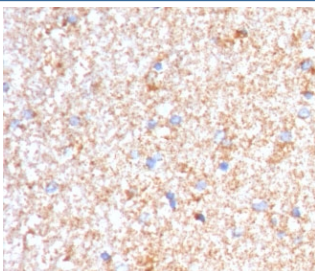


Serum Amyloid P Antibody [clone SMPC-1] (V7605)

Catalog No.	Formulation	Size
V7605-100UG	0.2 mg/ml in 1X PBS with 0.1 mg/ml BSA (US sourced) and 0.05% sodium azide	100 ug
V7605-20UG	0.2 mg/ml in 1X PBS with 0.1 mg/ml BSA (US sourced) and 0.05% sodium azide	20 ug
V7605SAF-100UG	1 mg/ml in 1X PBS; BSA free, sodium azide free	100 ug

Bulk quote request

Availability	1-3 business days
Species Reactivity	Human
Format	Purified
Host	Mouse
Clonality	Monoclonal (mouse origin)
Isotype	Mouse IgG2b, kappa
Clone Name	SMPC-1
Purity	Protein G affinity chromatography
UniProt	P02743
Applications	Immunohistochemistry (FFPE) : 1-2ug/ml
Limitations	This Serum Amyloid P antibody is available for research use only.



IHC staining of FFPE human brain with Serum Amyloid P antibody (clone SMPC-1).
HIER: boil tissue sections in pH 9 10mM Tris with 1mM EDTA for 10-20 min and allow to cool before testing.

Description

Serum amyloid P (SAP) is a glycoprotein that can interact with DNA and histones and may scavenge nuclear material released from damaged circulating cells. May also function as a calcium-dependent lectin. [UniProt]

Application Notes

The stated application concentrations are suggested starting points. Titration of the Serum Amyloid P antibody may be required due to differences in protocols and secondary/substrate sensitivity.

Immunogen

Amino acids 143-223 were used as the immunogen for the Serum Amyloid P antibody.

Storage

Store the Serum Amyloid P antibody at 2-8oC (with azide) or aliquot and store at -20oC or colder (without azide).