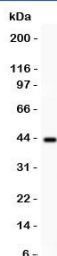


SERPINB2 Antibody (R31768)

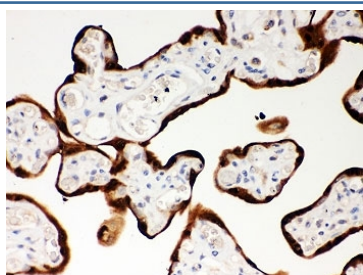
Catalog No.	Formulation	Size
R31768	0.5mg/ml if reconstituted with 0.2ml sterile DI water	100 ug

Bulk quote request

Availability	1-3 business days
Species Reactivity	Human
Format	Antigen affinity purified
Host	Rabbit
Clonality	Polyclonal (rabbit origin)
Isotype	Rabbit IgG
Purity	Antigen affinity
Buffer	Lyophilized from 1X PBS with 2.5% BSA and 0.025% sodium azide
Gene ID	5055
Applications	Western Blot : 0.5-1ug/ml IHC (FFPE) : 0.5-1ug/ml
Limitations	This SERPINB2 antibody is available for research use only.



Western blot testing of SERPINB2 antibody and human placenta lysate.
Predicted/observed size ~43KD



IHC-P: SERPINB2 antibody testing of human placenta tissue

Description

SERPINB2 is also known as PAI or PAI2. It is a coagulation factor that inactivates tPA and Urokinase. It is present in most cells, especially monocytes/macrophages. The protein exists in two forms, a 60-kDa extracellular glycosylated form and a 43-kDa intracellular form. It is present only at detectable quantities in blood during pregnancy, as it is produced by the placenta, and may explain partially the increased rate of thrombosis during pregnancy. The majority of expressed SERPINB2 remains unsecreted due to the presence of an inefficient internal signal peptide.

Application Notes

The stated application concentrations are suggested starting amounts. Titration of the SERPINB2 antibody may be required due to differences in protocols and secondary/substrate sensitivity.

Immunogen

Human partial recombinant protein (AA 1-180) was used as the immunogen for this SERPINB2 antibody.

Storage

After reconstitution, the SERPINB2 antibody can be stored for up to one month at 4°C. For long-term, aliquot and store at -20°C. Avoid repeated freezing and thawing.