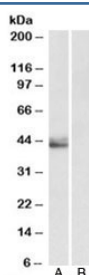


SERPINB1 Antibody (R34669)

Catalog No.	Formulation	Size
R34669-100UG	0.5 mg/ml in 1X TBS, pH7.3, with 0.5% BSA (US sourced) and 0.02% sodium azide	100 ug

[Bulk quote request](#)

Availability	1-3 business days
Species Reactivity	Human
Format	Antigen affinity purified
Clonality	Polyclonal (goat origin)
Isotype	Goat Ig
Purity	Antigen affinity
Gene ID	1992
Applications	Western Blot : 0.5-1.5ug/ml ELISA (peptide) LOD : 1:64000
Limitations	This SERPINB1 antibody is available for research use only.



Western blot testing of human placenta lysate with SERPINB1 antibody at 0.5ug/ml with [B] and without [A] blocking/immunizing peptide. Predicted/observed molecular weight: ~43kDa.

Description

Additional name(s) for this target protein: Serpin peptidase inhibitor, clade B (ovalbumin), member 1

Application Notes

Optimal dilution of the SERPINB1 antibody should be determined by the researcher.

Immunogen

Amino acids KTINQWVKGQTEGK were used as the immunogen for this SERPINB1 antibody.

Storage

Aliquot and store the SERPINB1 antibody at -20oC.