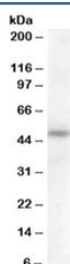


## SERPINA12 Antibody (R35541)

Catalog No.	Formulation	Size
R35541-100UG	0.5 mg/ml in 1X TBS, pH7.3, with 0.5% BSA (US sourced) and 0.02% sodium azide	100 ug

[Bulk quote request](#)

Availability	1-3 business days
Species Reactivity	Human
Format	Antigen affinity purified
Clonality	Polyclonal (goat origin)
Isotype	Goat Ig
Purity	Antigen affinity
Gene ID	145264
Applications	Western Blot : 0.3-1ug/ml ELISA (peptide) LOD : 1:32000
Limitations	This SERPINA12 antibody is available for research use only.



Western blot testing of human adipose lysate with SERPINA12 antibody at 0.5ug/ml.  
Predicted molecular weight: ~47kDa.

### Description

Additional name(s) for this target protein: Serpin peptidase inhibitor, clade A (alpha-1 antiproteinase, antitrypsin), member 12

### Application Notes

Optimal dilution of the SERPINA12 antibody should be determined by the researcher.

### Immunogen

Amino acids RARWKHEFDPNVTk were used as the immunogen for this SERPINA12 antibody.

## **Storage**

Aliquot and store the SERPINA12 antibody at -20oC.