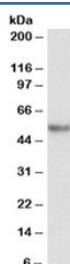


SERPINA1 Antibody (R35340)

Catalog No.	Formulation	Size
R35340-100UG	0.5 mg/ml in 1X TBS, pH7.3, with 0.5% BSA (US sourced) and 0.02% sodium azide	100 ug

[Bulk quote request](#)

Availability	1-3 business days
Species Reactivity	Human
Format	Antigen affinity purified
Clonality	Polyclonal (goat origin)
Isotype	Goat Ig
Purity	Antigen affinity
Gene ID	5265
Applications	Western Blot : 0.3-1ug/ml ELISA (peptide) LOD : 1:16000
Limitations	This SERPINA1 antibody is available for research use only.



Western blot testing of albumin-depleted human plasma lysate with SERPINA1 antibody at 0.3ug/ml. Expected molecular weight: ~47 kDa (unmodified), 52 kDa (glycosylated).

Description

Additional name(s) for this target protein: Serpin peptidase inhibitor, clade A (alpha-1 antiproteinase, antitrypsin), member 1

Application Notes

Optimal dilution of the SERPINA1 antibody should be determined by the researcher.

Immunogen

Amino acids QKTDTSHHQDHP were used as the immunogen for this SERPINA1 antibody.

Storage

Aliquot and store the SERPINA1 antibody at -20oC.