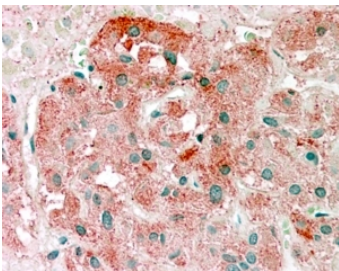


Semaphorin 3E Antibody (R34564)

| Catalog No. | Formulation | Size |
|--------------|-------------------------------------------------------------------------------|--------|
| R34564-100UG | 0.5 mg/ml in 1X TBS, pH7.3, with 0.5% BSA (US sourced) and 0.02% sodium azide | 100 ug |

[Bulk quote request](#)

| | |
|---------------------------|-------------------------------------------------------------------------|
| Availability | 1-3 business days |
| Species Reactivity | Human |
| Format | Antigen affinity purified |
| Host | Goat |
| Clonality | Polyclonal (goat origin) |
| Isotype | Goat Ig |
| Purity | Antigen affinity |
| Gene ID | 9723 |
| Applications | Immunohistochemistry (FFPE) : 2-4ug/ml ELISA (peptide) LOD : 1:64000 |
| Limitations | This Semaphorin 3E antibody is available for research use only. |



IHC testing of FFPE human adrenal gland with Semaphorin 3E antibody at 2.5ug/ml. HIER: steamed with pH6 citrate buffer, AP-staining.

Description

Additional name(s) for this target protein: SEMA3E

Application Notes

Optimal dilution of the Semaphorin 3E antibody should be determined by the researcher.

Immunogen

Amino acids KPEHYRLPRHTLDS were used as the immunogen for this Semaphorin 3E antibody.

Storage

Aliquot and store the Semaphorin 3E antibody at -20oC.