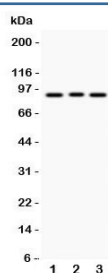


SEMA3A Antibody (R31766)

Catalog No.	Formulation	Size
R31766	0.5mg/ml if reconstituted with 0.2ml sterile DI water	100 ug

[Bulk quote request](#)

Availability	1-3 business days
Species Reactivity	Human
Format	Antigen affinity purified
Host	Rabbit
Clonality	Polyclonal (rabbit origin)
Isotype	Rabbit IgG
Purity	Antigen affinity
Buffer	Lyophilized from 1X PBS with 2.5% BSA, 0.025% sodium azide
UniProt	Q14563
Applications	Western Blot : 0.5-1ug/ml
Limitations	This SEMA3A antibody is available for research use only.



Western blot testing of SEMA3A antibody and Lane 1: 293T; 2: A549; 3: HeLa lysate.
Predicted molecular weight: ~89 kDa.

Description

Semaphorin 3A, also called SEMA3A, SEMA1, SEMAL and COLL1, is a member of the semaphorin family and encodes a protein with an Ig-like C2-type (immunoglobulin-like) domain, a PSI domain and a Sema domain. This secreted protein can function as either a chemorepulsive agent, inhibiting axonal outgrowth, or as a chemoattractive agent, stimulating the growth of apical dendrites. In both cases, SEMA3a is vital for normal neuronal pattern development. Increased expression of this protein is associated with schizophrenia and is seen in a variety of human tumor cell lines. Also, aberrant release of SEMA3A is associated with the progression of Alzheimers disease.

Application Notes

The stated application concentrations are suggested starting amounts. Titration of the SEMA3A antibody may be required due to differences in protocols and secondary/substrate sensitivity.

Immunogen

Human partial recombinant protein (AA 550-771) was used as the immunogen for this SEMA3A antibody.

Storage

After reconstitution, the SEMA3A antibody can be stored for up to one month at 4°C. For long-term, aliquot and store at -20°C. Avoid repeated freezing and thawing.