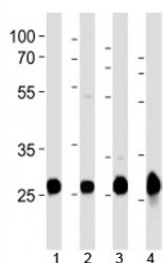


Sdhb Antibody (F52903)

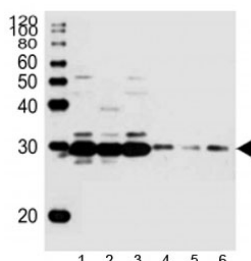
Catalog No.	Formulation	Size
F52903-0.4ML	In 1X PBS, pH 7.4, with 0.09% sodium azide	0.4 ml
F52903-0.08ML	In 1X PBS, pH 7.4, with 0.09% sodium azide	0.08 ml

[Bulk quote request](#)

Availability	1-3 business days
Species Reactivity	Human, Mouse, Rat, Zebrafish
Predicted Reactivity	Bovine, Chicken, Pig
Format	Antigen affinity purified
Clonality	Polyclonal (rabbit origin)
Isotype	Rabbit Ig
Purity	Antigen affinity
UniProt	A5PL98
RRID	AB_2890984
Applications	Western Blot : 1:1000
Limitations	This Sdhb antibody is available for research use only.



Western blot analysis of lysate from mouse 1) heart, 2) liver, 3) rat heart, 4) zebrafish heart tissue using Sdhb antibody at 1:1000. Predicted molecular weight 25-32 kDa.



Western blot analysis of lysate from mouse 1) heart, 2) liver, 3) rat heart, and human 4) HL-60, 5) A431, 6) HepG2 cell line using Sdhb antibody at 1:1000. Predicted molecular weight 25-32 kDa.

Description

Iron-sulfur protein (IP) subunit of succinate dehydrogenase (SDH) that is involved in complex II of the mitochondrial electron transport chain and is responsible for transferring electrons from succinate to ubiquinone (coenzyme Q) (By similarity).

Application Notes

Titration of the Sdhb antibody may be required due to differences in protocols and secondary/substrate sensitivity.

Immunogen

This Sdhb antibody was produced from a rabbit immunized with a KLH conjugated synthetic peptide between 147-182 amino acids from the zebrafish protein.

Storage

Aliquot the Sdhb antibody and store frozen at -20oC or colder. Avoid repeated freeze-thaw cycles.