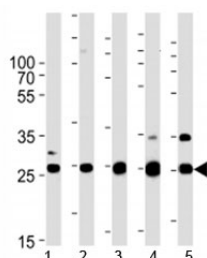


Sdhb Antibody (F52394)

Catalog No.	Formulation	Size
F52394-0.4ML	In 1X PBS, pH 7.4, with 0.09% sodium azide	0.4 ml
F52394-0.08ML	In 1X PBS, pH 7.4, with 0.09% sodium azide	0.08 ml

[Bulk quote request](#)

Availability	1-3 business days
Species Reactivity	Human, Mouse, Rat, Zebrafish
Predicted Reactivity	Bovine, Chicken, Pig
Format	Antigen affinity purified
Host	Rabbit
Clonality	Polyclonal (rabbit origin)
Isotype	Rabbit Ig
Purity	Antigen affinity
UniProt	A5PL98
Applications	Western Blot : 1:1000
Limitations	This Sdhb antibody is available for research use only.



Sdhb antibody western blot analysis in human 1) HeLa, 2) HL-60, 3) mouse heart, 4) rat heart, and 5) zebrafish heart tissue lysate. Predicted molecular weight 25-32 kDa.

Description

Iron-sulfur protein (IP) subunit of succinate dehydrogenase (SDH) that is involved in complex II of the mitochondrial electron transport chain and is responsible for transferring electrons from succinate to ubiquinone (coenzyme Q) (By similarity).

Application Notes

Titration of the Sdhb antibody may be required due to differences in protocols and secondary/substrate sensitivity.

Immunogen

A portion of amino acids 137-162 from the zebrafish protein was used as the immunogen for this Sdhb antibody.

Storage

Aliquot the Sdhb antibody and store frozen at -20oC or colder. Avoid repeated freeze-thaw cycles.