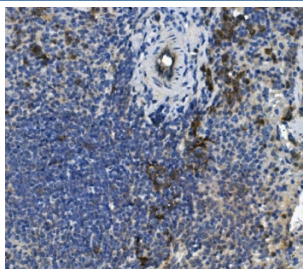


Scramblase 1 Antibody / PLSCR1 (RQ6067)

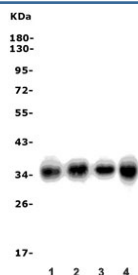
Catalog No.	Formulation	Size
RQ6067	0.5mg/ml if reconstituted with 0.2ml sterile DI water	100 ug

Bulk quote request

Availability	1-3 business days
Species Reactivity	Human, Mouse
Format	Antigen affinity purified
Host	Rabbit
Clonality	Polyclonal (rabbit origin)
Isotype	Rabbit IgG
Purity	Affinity purified
Buffer	Lyophilized from 1X PBS with 2% Trehalose and 0.025% sodium azide
UniProt	O15162
Localization	Cytoplasmic, nuclear, membrane
Applications	Western Blot : 0.5-1ug/ml Immunohistochemistry : 1-2ug/ml Direct ELISA : 0.1-0.5ug/ml
Limitations	This Scramblase 1 antibody is available for research use only.



IHC staining of FFPE mouse spleen with Scramblase 1 antibody. HIER: boil tissue sections in pH8 EDTA for 20 min and allow to cool before testing.



Western blot testing of human 1) HeLa, 2) A431, 3) HEK293 and 4) A549 cell lysate with Scramblase 1 antibody. Predicted molecular weight ~35 kDa.

Description

Phospholipid scramblase 1 is a protein that in human is encoded by the PLSCR1 gene. This gene is mapped to 3q24.

Application Notes

Optimal dilution of the Scramblase 1 antibody should be determined by the researcher.

Immunogen

Recombinant human protein (amino acids M1-S54) was used as the immunogen for the Scramblase 1 antibody.

Storage

After reconstitution, the Scramblase 1 antibody can be stored for up to one month at 4oC. For long-term, aliquot and store at -20oC. Avoid repeated freezing and thawing.