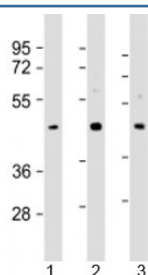


SAPCD2 Antibody / C9orf140 (F53851)

| Catalog No. | Formulation | Size |
|---------------|--|---------|
| F53851-0.2ML | In 1X PBS, pH 7.4, with 0.09% sodium azide | 0.2 ml |
| F53851-0.05ML | In 1X PBS, pH 7.4, with 0.09% sodium azide | 0.05 ml |

[Bulk quote request](#)

| | |
|---------------------------|--|
| Availability | 1-3 business days |
| Species Reactivity | Human |
| Format | Antigen affinity purified |
| Host | Rabbit |
| Clonality | Polyclonal (rabbit origin) |
| Isotype | Rabbit Ig |
| Purity | Antigen affinity |
| UniProt | Q86UD0 |
| Applications | Western Blot : 1:1000-2000 |
| Limitations | This SAPCD2 antibody is available for research use only. |



Western blot testing of human 1) HepG2, 2) MCF-7 and 3) PC-3 cell lysate with SAPCD2 antibody at 1:2000. Predicted molecular weight: 43 kDa.

Description

Additional name(s): Suppressor APC domain-containing protein 2; Tumor specificity and mitosis phase-dependent expression protein (TS/MDEP); p42.3

Application Notes

Titration of the SAPCD2 antibody may be required due to differences in protocols and secondary/substrate sensitivity.

Immunogen

A portion of amino acids 333-367 from the human protein was used as the immunogen for the SAPCD2 antibody.

Storage

Aliquot the SAPCD2 antibody and store frozen at -20oC or colder. Avoid repeated freeze-thaw cycles.