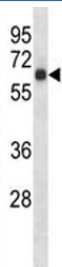


S6k1 Antibody (F43705)

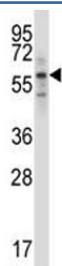
Catalog No.	Formulation	Size
F43705-0.4ML	In 1X PBS, pH 7.4, with 0.09% sodium azide	0.4 ml
F43705-0.08ML	In 1X PBS, pH 7.4, with 0.09% sodium azide	0.08 ml

[Bulk quote request](#)

Availability	1-3 business days
Species Reactivity	Human, Mouse
Predicted Reactivity	Bovine, Rabbit, Rat
Format	Antigen affinity purified
Host	Rabbit
Clonality	Polyclonal (rabbit origin)
Isotype	Rabbit Ig
Purity	Antigen affinity
UniProt	Q8BSK8
Applications	Western Blot : 1:1000
Limitations	This S6k1 antibody is available for research use only.



S6k1 antibody western blot analysis in mouse heart tissue lysate. Predicted molecular weight: 60-70 kDa



S6k1 antibody western blot analysis in ZR-75-1 lysate.

Description

Rps6kb1 acts to integrate nutrient and growth factor signals in regulation of protein synthesis, cell proliferation, cell growth, cell cycle progression and cell survival. Downstream effector of the mTOR signaling pathway. Phosphorylates specifically ribosomal protein S6 in response to insulin or several classes of mitogens. During translation initiation, the inactive form associates with the eIF-3 complex under conditions of nutrient depletion. Mitogenic stimulation leads to phosphorylation and dissociation from the eIF-3 complex and the free activated form can phosphorylate other translational targets including EIF4B. Promotes protein synthesis by phosphorylating PDCD4 at 'Ser-67' and targeting it for degradation. Phosphorylates RICTOR leading to regulation of mammalian target of rapamycin complex 2 (mTORC2) signaling; probably phosphorylates RICTOR at 'Thr-1135'. Phosphorylates IRS1 at multiple serine residues coupled with insulin resistance; probably phosphorylates IRS1 at 'Ser-270'. Required for TNF-alpha induced IRS-1 degradation. Phosphorylates EEF2K in response to IGF1 and inhibits EEF2K activity. Phosphorylates BAD at 'Ser-136' in response to IGF1 leading to BAD inactivation and inhibition of BAD-induced apoptosis. Phosphorylates mitochondrial RMP leading to dissociation of a RMP:PPP1CC complex; probably phosphorylates RMP at 'Ser-136'. The free mitochondrial PPP1CC can dephosphorylate RPS6KB1 at Thr-412 which is proposed to be a negative feed back mechanism for the RPS6KB1 antiapoptotic function. Phosphorylates POLDIP3 (By similarity).

Application Notes

Titration of the S6k1 antibody may be required due to differences in protocols and secondary/substrate sensitivity.

Immunogen

A portion of amino acids 481-509 from the mouse protein was used as the immunogen for this S6k1 antibody.

Storage

Aliquot the S6k1 antibody and store frozen at -20oC or colder. Avoid repeated freeze-thaw cycles.