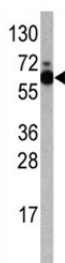


## S6K Antibody (F48466)

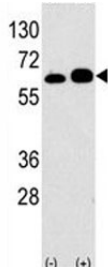
Catalog No.	Formulation	Size
F48466-0.4ML	In 1X PBS, pH 7.4, with 0.09% sodium azide	0.4 ml
F48466-0.08ML	In 1X PBS, pH 7.4, with 0.09% sodium azide	0.08 ml

[Bulk quote request](#)

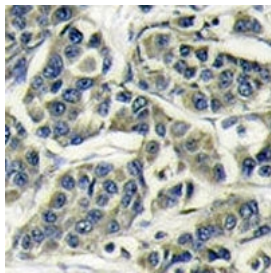
<b>Availability</b>	1-3 business days
<b>Species Reactivity</b>	Human
<b>Predicted Reactivity</b>	Mouse, Rat, Bovine, Rabbit
<b>Format</b>	Purified
<b>Host</b>	Rabbit
<b>Clonality</b>	Polyclonal (rabbit origin)
<b>Isotype</b>	Rabbit Ig
<b>Purity</b>	Purified
<b>UniProt</b>	P23443
<b>Applications</b>	Western Blot : 1:1000 IHC (Paraffin) : 1:50-1:100
<b>Limitations</b>	This S6K antibody is available for research use only.



Western blot analysis of S6K antibody and Jurkat lysate. Predicted molecular weight: 60-70 kDa



Western blot analysis of S6K antibody and 293 lysate transiently transfected with the RPS6KB1 gene (2ug/lane).



IHC analysis of FFPE human breast carcinoma stained with S6K antibody

## Description

This gene encodes a member of the RSK (ribosomal s6 kinase) family of serine/threonine kinases. This kinase phosphorylates several residues of the S6 ribosomal protein. The kinase activity of this protein leads to an increase in protein synthesis and cell proliferation. Inhibition of the S6K1 protein, or a lack of it, slows the production of adipose (fat) cells by disrupting and retarding the initial commitment stage of their formation. [Wiki]

## Application Notes

Titration of the S6K antibody may be required due to differences in protocols and secondary/substrate sensitivity.

## Immunogen

A portion of amino acids 277-306 from the human protein was used as the immunogen for this S6K antibody.

## Storage

Aliquot the S6K antibody and store frozen at -20oC or colder. Avoid repeated freeze-thaw cycles.