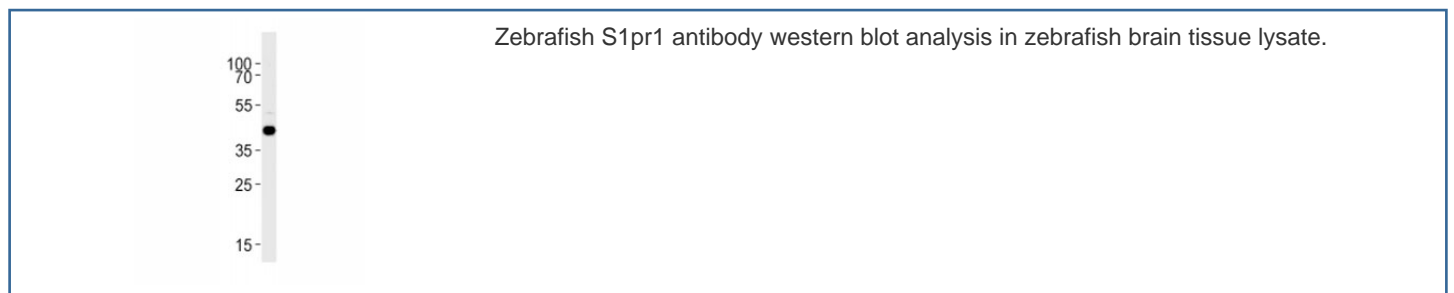


## Zebrafish / Danio rerio S1pr1 Antibody (F52393)

Catalog No.	Formulation	Size
F52393-0.4ML	In 1X PBS, pH 7.4, with 0.09% sodium azide	0.4 ml
F52393-0.08ML	In 1X PBS, pH 7.4, with 0.09% sodium azide	0.08 ml

[Bulk quote request](#)

<b>Availability</b>	1-3 business days
<b>Species Reactivity</b>	Zebrafish
<b>Format</b>	Antigen affinity purified
<b>Host</b>	Rabbit
<b>Clonality</b>	Polyclonal (rabbit origin)
<b>Isotype</b>	Rabbit Ig
<b>Purity</b>	Antigen affinity
<b>UniProt</b>	Q9DDK4
<b>Applications</b>	Western Blot : 1:1000
<b>Limitations</b>	This Zebrafish S1pr1 antibody is available for research use only.



### Description

Receptor for the lysosphingolipid sphingosine 1-phosphate (S1P). S1P is a bioactive lysophospholipid that elicits diverse physiological effect on most types of cells and tissues. This inducible epithelial cell G-protein-coupled receptor may be involved in the processes that regulate the differentiation of endothelial cells. Seems to be coupled to the G(i) subclass of heteromeric G proteins.

This Zebrafish antibody is part of a [broader Zebrafish / Danio rerio antibody panel](#) offered by NSJ Bioreagents.

## Application Notes

Titration of the Zebrafish S1pr1 antibody may be required due to differences in protocols and secondary/substrate sensitivity.

## Immunogen

A portion of amino acids 311-335 from the zebrafish protein was used as the immunogen for this Zebrafish S1pr1 antibody.

## Storage

Aliquot the Zebrafish S1pr1 antibody and store frozen at -20oC or colder. Avoid repeated freeze-thaw cycles.